

GV-VD8700 IR Vandal Proof IP Dome

User's Manual V1.00



Timestamp	Name	Image	Conf0	Conf1	Conf2
2018/02/10 21:44:55	Unknown		Mark_Lin 51	Peter_Liu 44.2	Ray_Su 43.2
	Cathy Lee		Mark_Lin 57.3	Zach_Lin 48.9	Kylin_Lin 44.3
	enter Roberts		Mark_Lin 55.9	Peter_Liu 54.6	Ray_Su 49.9
	ma Wilson		Roger 51.3	Daniel_Chung 42.4	Mars_Lin 40.4
	Bonnie Brown		Roger 64.9	Mark_Lin 48.3	Kim_Lu 41.7
	Dylan Thomas		Joe_Wu 58.5	Cesar_Liu 40.6	York_Yang 37.8

Before attempting to connect or operate this product, please read these instructions carefully and save this manual for future use.



© 2018 GeoVision, Inc. All rights reserved.

Under the copyright laws, this manual may not be copied, in whole or in part, without the written consent of GeoVision.

Every effort has been made to ensure that the information in this manual is accurate. GeoVision, Inc. makes no expressed or implied warranty of any kind and assumes no responsibility for errors or omissions. No liability is assumed for incidental or consequential damages arising from the use of the information or products contained herein. Features and specifications are subject to change without notice.

Note: No memory card slot or local storage function for Argentina.

GeoVision, Inc.
9F, No. 246, Sec. 1, Neihu Rd.,
Neihu District, Taipei, Taiwan
Tel: +886-2-8797-8377
Fax: +886-2-8797-8335
<http://www.geovision.com.tw>

Trademarks used in this manual: *GeoVision*, the *GeoVision* logo and GV series products are trademarks of GeoVision, Inc. *Windows* is the registered trademark of Microsoft Corporation.

March, 2018

Preface

Welcome to the *GV-VD8700 IR Vandal Proof IP Dome User's Manual*. The instructions will guide you through the installation and use of the camera.

This *Manual* is designed for the following models and firmware version:

Model	Model Number	Firmware Version
IR Vandal Proof IP Dome	GV-VD8700	V1.00

Contents

Contents	ii
Note for Connecting to GV-DVR / NVR / VMS	vi
Note for Recording	vii
Note for Installing Camera Outdoor	viii
Optional Accessories	ix
Chapter 1 Introduction	1
1.1 System Requirements.....	3
1.2 Packing List	4
1.3 Overview.....	6
1.4 Installing the Camera	9
1.5 Connecting the Camera	19
1.6 I/O Connector	20
Chapter 2 Getting Started	21
2.1 Looking Up the IP Address.....	21
2.2 Changing the static IP Address	22
2.3 Accessing Your Surveillance Images	24
2.3 Configuring the Basics	26
Chapter 3 Accessing the Live View	27
3.1 The Live View Window.....	27
3.2 The Control Panel of the Live View Window.....	29
3.3 Snapshot of a Live Video	31
3.4 Video Recording	31
3.5 Picture-in-Picture View.....	32
Chapter 4 Administrator Mode	33
4.1 Audio & Video Settings	34
4.1.1 Video Settings.....	34
4.1.2 Audio Settings.....	36
4.1.3 RTSP	37
4.1.4 Privacy Mask.....	38
4.1.5 Text Overlay	39

4.2	Event and Alerts.....	40
4.2.1	Face Recognition	40
4.2.2	Tampering Alarm	41
4.2.3	Motion Detection	42
4.2.4	I/O Control	43
4.2.4.1	Input Settings.....	43
4.2.4.2	Output Settings.....	44
4.2.5	E-mail.....	45
4.3	Network	46
4.3.1	LAN Configuration.....	46
4.3.2	Advanced TCP/IP.....	48
4.3.3	IP Filter	51
4.4	Management.....	52
4.4.1	Date and Time.....	52
4.4.2	User Account.....	53
4.4.3	Tools	54
4.4.4	External Storage Settings.....	56
4.4.5	System Log.....	57
Chapter 5 Face Recognition.....		58
5.1	Features	59
5.2	Installation Flowchart	60
5.3	Ideal Camera Position.....	61
5.4	Adjusting Illumination	63
5.4.1	Daytime.....	63
5.4.2	Nighttime.....	64
5.4.3	Low Illumination (WDR).....	65
5.5	Enrolling Face Data	66
5.5.1	Photo Requirements	69
5.6	Face Recognition Basic Settings.....	72
5.6.1	Settings.....	72
5.6.2	License	73
5.6.3	Management.....	74
5.6.4	Events.....	75
Chapter 6 Recording and Playback.....		78
6.1	Playback Using the Memory Card.....	78

- Chapter 7 Advanced Applications 79**
 - 7.1 Upgrading System Firmware..... 79
 - 7.1.1 Using the Web Interface..... 79
 - 7.1.2 Using the GV-IP Device Utility 80
 - 7.2 Restoring to Factory Default Settings..... 82
 - 7.2.1 Using the Web Interface..... 82
 - 7.2.2 Directly on the Camera 82

- Chapter 8 DVR / NVR / VMS Configurations 83**
 - 8.1 Setting Up IP Cameras on GV-DVR / NVR..... 84
 - 8.1.1 Customizing Camera Settings on GV-DVR / NVR 86
 - 8.2 Setting Up IP Cameras on GV-VMS..... 88

- Chapter 9 Smart Device Connection 91**

- Appendix 92**
 - A. RTSP Protocol Support..... 92
 - B. Limitations to Face Recognition 93

Regulatory Notices



FCC Notice

This equipment has been tested and found to comply with the limits for a Class A digital device, pursuant to part 15 of the FCC Rules. These limits are designed to provide reasonable protection against harmful interference when the equipment is operated in a commercial environment.

Class A

This equipment generates, uses, and can radiate radio frequency energy and, if not installed and used in accordance with the instruction manual, may cause harmful interference to radio communications. Operation of this equipment in a residential area is likely to cause harmful interference in which case the user will be required to correct the interference at their own expense.



CE Notice

This is a Class A product. In a domestic environment, this product may cause radio interference in which case the user may be required to take adequate measures.



RoHS Compliance

The Restriction of Hazardous Substances (RoHS) Directive is to forbid the use of hazardous materials of production. To meet the RoHS Directive requirements, this product is made to be RoHS compliant.

Naming Definition

GV-DVR / NVR	GeoVision Analog and Digital Video Recording Software. The GV-DVR also refers to GV-Multicam System or GV-Hybrid DVR .
GV-VMS	GeoVision Video Management System for IP cameras.

Note for Connecting to GV-DVR / NVR / VMS

The camera is designed to work with and record on GV-DVR / NVR / VMS, a video management system.

Once the camera is connected to the GV-DVR / NVR / VMS, the resolution set on the GV-DVR / NVR / VMS will override the resolution set on the camera's Web interface. You can only change the resolution settings through the Web interface when the connection to the GV-DVR / NVR / VMS is interrupted.

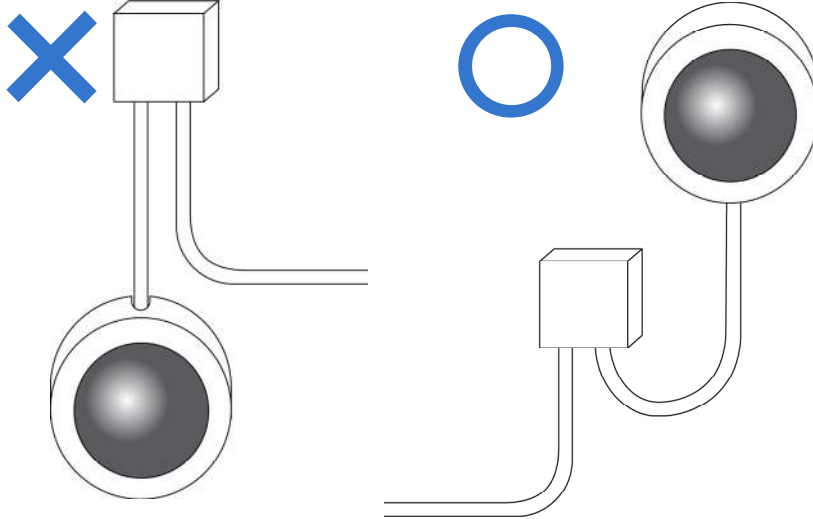
Note for Recording

1. By default, the recording function is disabled. Configure the function in the camera's Web interface to record alarm events to the memory card inserted in the camera upon disconnection from GV-DVR / NVR / VMS. See 4.4.3 *Tools* for details.
2. Mind the following when using a memory card for recording:
 - Recorded data on the memory card can be damaged or lost if the data are accessed while the camera is under physical shock, power interruption, memory card detachment or when the memory card reaches the end of its lifespan. No guarantee is provided for such causes.
 - The stored data can be lost if the memory card is not accessed for a long period of time. Back up your data periodically if you seldom access the memory card.
 - Memory cards are expendable and their durability varies according to the conditions of the installed site and how they are used. Back up your data regularly and replace the memory card annually.
 - Replace the memory card when its read/write speed is lower than 6 MB/s or when the memory card is frequently undetected by the camera.
 - To avoid power outage, it is highly recommended to apply a battery backup (UPS).
3. For better performance, it is highly recommended to use memory cards of the following specifications:
 - Micro SD card of MLC NAND flash, Class 10.

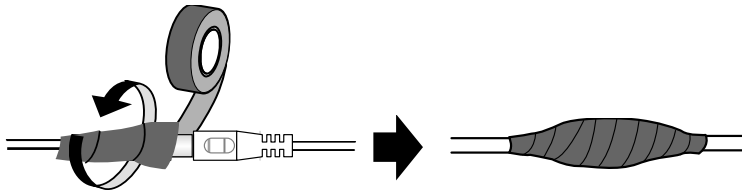
Note for Installing Camera Outdoor

When installing the camera, be sure that:

1. The camera is set up above the junction box to prevent water from entering the camera along the cables.



2. Any PoE, power, audio and I/O cables are waterproofed using waterproof silicon rubber or the like.



3. The screws are tightened and the cover is in place after opening the camera cover.

Optional Accessories

Optional devices can expand your camera's capabilities and versatility. Contact our sales representatives for more information.

Device	Description
GV-Mount Accessories	GV-Mount Accessories provide a comprehensive lineup of accessories for installing the camera on ceiling, wall corner and pole. For details, see <i>GV-Mount Accessories Installation Guide</i> .
GV-PA191 PoE Adapter	The GV-PA901 is a Power over Ethernet (PoE) adapter designed to provide power to the IP device through a single Ethernet cable.
GV-PoE Switch	GV-PoE Switch is designed to provide power along with network connection for IP devices. GV-PoE Switch is available in various models with different numbers and types of ports.
GV-Relay V2	GV-Relay V2 is designed to expand the voltage load of GV IP devices. It provides 4 relay outputs, and each can be set as normally open (NO) or normally closed (NC) independently as per your requirement.
Metal PG21 Conduit Connector	The metal PG21 conduit connector is used for running the wires through a 3/4" conduit pipe.
Power Adapter	Contact our sales representatives for the countries and areas supported.

Chapter 1 Introduction



GV-VD8700 Vandal Proof IP Dome camera features cutting-edge face recognition technology that allows users to identify important personnel from its database, on the fly. Up to 10,000 face profiles can be defined in the camera's database, and also categorized to meet various corporate needs, such as facilitating customer service or security management and more. The camera's face recognition mechanism is effective for a distance of up to 4 m (13.12 ft) while able to identify up to 10 persons simultaneously. With a recognition time of within 2 seconds, it can quickly identify VIP guests and / or potential intruders. When integrated with GV-VMS, GV-VD8700's face recognition can be used to trigger alerts according to the predefined rules, thereby providing an improved, reliable security management.

As an outdoor camera, GV-VD8700 is designed with IK10 vandal resistance and IP66 ingress protection. The camera can support H.265 video codec to achieve better compression ratio while maintaining high-quality pictures at reduced network bandwidths. For night operations, the camera is equipped with an IR effective distance of up to 40 m (131.23 ft). Its WDR and Backlight Compensation allow the camera to detect faces in environments with drastic light contrast.

Features:

- 1/2.5" progressive scan low lux CMOS
- Min. illumination at 0.04 lux
- Triple streams from H.265 and H.264
- Up to 30 fps at 3840 x 2160
- Vandal resistance (IK10)
- Ingress protection (IP66)
- Megapixel varifocal lens
- P-iris lens for auto iris control
- Day and Night function (with removable IR-cut filter)
- Intelligent IR
- Wide Dynamic Range (WDR)
- IR distance of up to 40 m (131.23 ft)
- 3-axis mechanism (pan / tilt / rotate)
- One sensor input and digital output
- Built-in micro SD card slot (SD/SDHC/SDXC/UHS-I, Class 10) for local storage
- DC 12V / PoE (IEEE 802.3af)
- One-way audio
- Defog
- Motion detection
- Tampering alarm
- Face recognition
- Text overlay
- Privacy mask
- IP address filtering
- Recording assigned by GV-Edge Recording Manager (Windows & Mac)
- Supports iPhone, iPad, and Android
- 3 languages on Web interface
- ONVIF (Profile S) conformant

1.1 System Requirements

Access the GV-VD8700 through **Microsoft Internet Explorer 11 or later**. Make sure the connected network is stable throughout the application.

1.2 Packing List

- H.265 Vandal Proof Dome



- Screw x 4



- I/O Cable



- Installation Sticker



- PG21 Conduit Connector



- Big Concave Hexagon Wrench



- Silica Gel Bag

- Screw Anchor x 4



- Audio Wire x 2



- RJ-45 Connector



- Waterproof Rubber Sets (for RJ-45 Cat.5 and DC12V / for RJ-45 Cat. 6)



Cat.5
(Ø 5 mm)



Cat.6
(Ø 6 mm)

- Torx Wrench

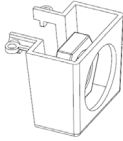


- Small Concave Hexagon Wrench



- Sticker (for Silica Gel Bag)

- Conduit Converter



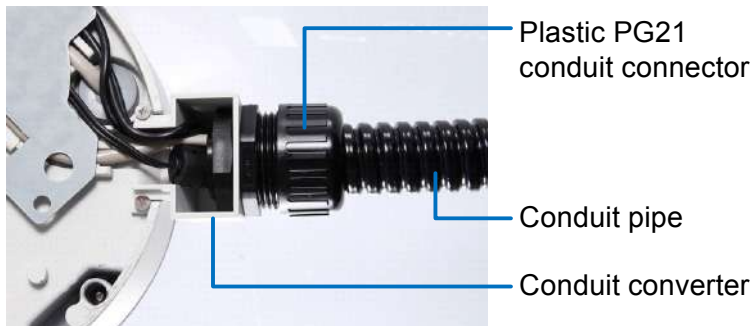
- Ruler
- Download Guide
- Warranty Card

- 8 GB Micro SD card
(MLC, SDHC, Class 10)

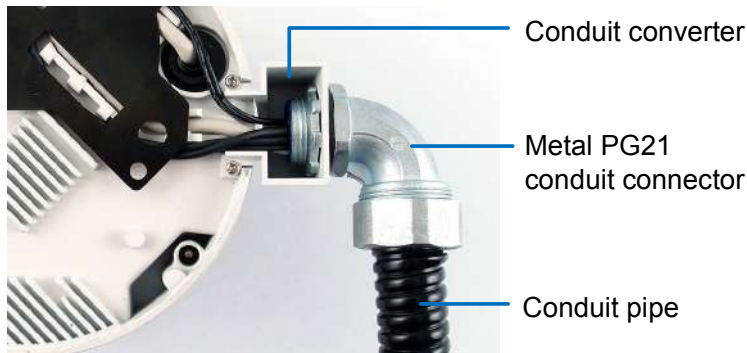
(The Micro SD Card is preinstalled in the camera)



Note: You can run the wires through a conduit pipe. After you have threaded all the wires, install the supplied conduit converter and plastic PG21 conduit connector with a self-prepared 1/2" conduit pipe to the camera. Power will have to be supplied through a PoE adapter, because the power adapter wire does not fit in a 1/2" pipe. You will have to purchase your own PG21 conduit connector if you want to use a 3/4" or 1" pipe.



A metal PG21 conduit connector can be purchased upon request. The metal PG21 conduit connector can be connected with a 3/4" pipe.



1.3 Overview



Figure 1-1

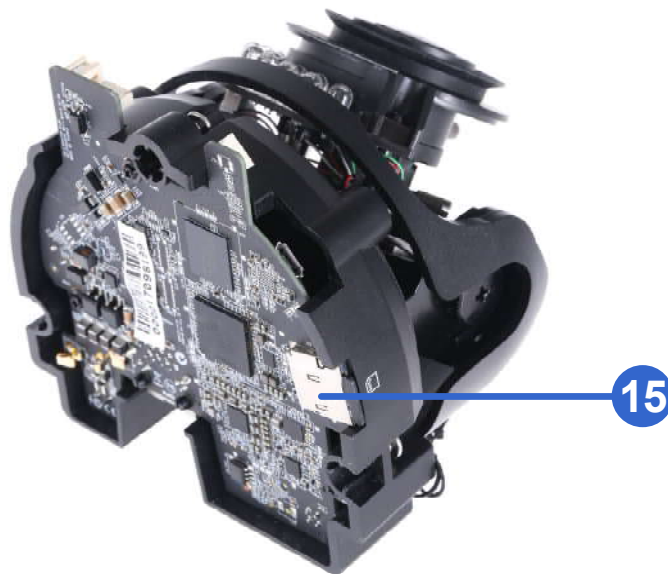


Figure 1-2

No.	Name	Description
1	LED Indicators	The power LED (top) turns on when the power is on and turns off when there is no power supply. The status LED (bottom) turns on when the system operates normally and turns off when an error occurs.
2	Audio Out	Currently not functional.
3	Line In	Connects to a microphone for audio input. Note: This interface only works with an external microphone with power supply.
4	LAN / PoE	Connects to a 10/100 Ethernet or PoE.
5	DC 12V	Connects to power.
6	Rotational Screw	Loosens to rotate the camera.
7	Conduit Connector	Waterproofs the Ethernet cable.
8	Default Button	Resets the camera to factory default settings. For details, see <i>7.2 Restoring to Factory Default Settings</i> .
9	Focus Screw	Adjusts the focus of the camera.

10	Zoom Screw	Zoom the camera in or out.
11	Tilt Screw	Loosens the screw to tilt the camera.
12	I/O Connector	Connects to I/O devices. For details, see <i>1.6 I/O Connectors</i> .
13	Built-in Microphone Connectors	Connects to a built-in microphone to record sound. For details, see <i>1.5 Connecting the Camera</i> .
14	Conduit Connector	Waterproofs the audio / I/O wires.
15	Memory Card Slot	Inserts a micro-SD card (SD/SDHC/SDXC/UHS-I, Class 10) to store recording data.

1.4 Installing the Camera

The camera is designed for outdoors. With the standard package, you can install the camera on the ceiling.

Note:

1. For optimal face recognition results, follow recommended guidelines to install the camera. For details, see [5.3 Ideal Camera Position](#).
 2. You can also install the camera to ceilings, wall corners (concave or convex), and poles using optional mounting kits. For details on these installations, see [GV-Mount Accessories Installation Guide](#).
 3. You need to format the memory card before using it for the first time. For details, see [4.4.4 External Storage Settings](#).
-

1. Remove the housing cover with the supplied torx wrench.



Figure 1-3

2. Optionally remove the cables that attach the built-in microphone to the camera to assist with installation.



Cables for built-in microphone

Figure 1-4

3. Remove the back plate with the supplied torx wrench and remove the safety lock with a Philips screwdriver. Keep the removed screw for later use.



Figure 1-5

4. Thread wires into the camera.
 - A. Rotate to remove the cap of the conduit connector.



Figure 1-6

- B. Unplug the conduit connector inside the housing and disintegrate the connector. You should have 3 parts:



Figure 1-7

- C. Thread the audio wires and I/O wires through the conduit entry and then through parts 1, 2, and 3 of the conduit connector.

Tip:

1. To make the threading easier, it is recommended to thread the wires in the order described in *Step 4-C*.
 2. Use a pair of pliers to help you pull the wires through the camera.
-

If you use cat 5 Ethernet cable, there are 5 holes each labeled with its diameter. Remove the plugs and push the wires to the corresponding hole listed below:



Figure 1-8

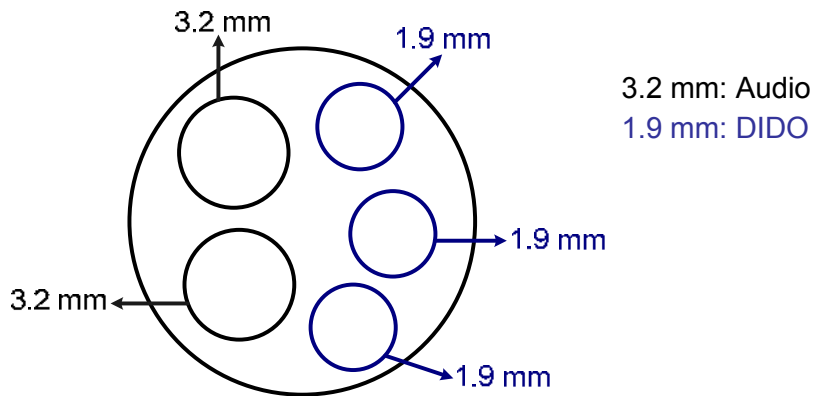


Figure 1-9

IMPORTANT:

1. Use the supplied ruler and leave at least 14 cm of I/O wires and 10 cm of audio wires between their connectors on the camera and the conduit connector.
 2. The plugs are used to prevent water from entering the camera housing. Keep the unused holes plugged and save the removed plugs for future use.
 3. Only thread the wires through their designated holes on the conduit connector to make sure the wires are properly sealed.
-

If you use cat 6 Ethernet cable, thread the DC 12V wires through the conduit connector. Refer to the following figure for the corresponding holes and their diameters.

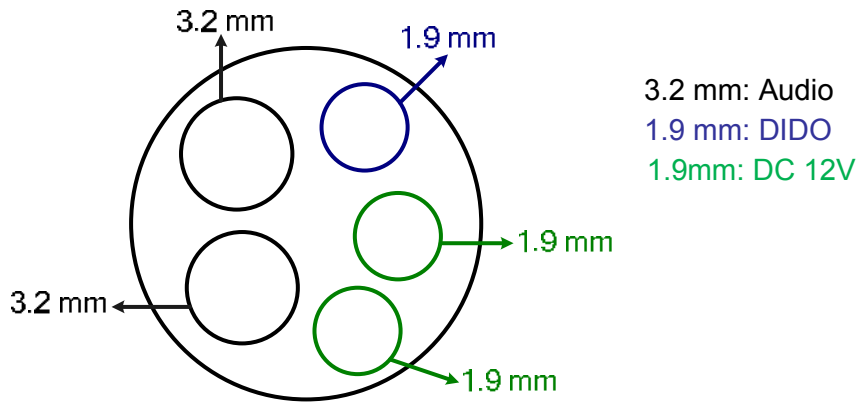


Figure 1-10

IMPORTANT: Leave more than 10 cm of power wires between their connectors on the camera and the conduit connector.

5. Install the Ethernet cable.
 - A. Rotate to remove the indicated cap and the plug inside.



Figure 1-11

- B. Thread an Ethernet cable (the end with no RJ-45 connector) and the optional power adapter wires from the back panel through the conduit connector.



Figure 1-12

IMPORTANT: Use the supplied ruler and leave about 14 cm of the Ethernet cable between the connector on the camera and the conduit connector.

- C. Re-install the cap. Make sure the cap is installed tightly to waterproof the camera.
- 6. Connect the wires to the camera and insert the memory card to the memory card slot. See *1.3 Overview*, *1.5 Connecting the Camera* and *1.6 I/O Connector*.

Tip:

Unscrew the indicated screws and lift the camera to help you connect the wires and insert the memory card.



7. Sort out the wires at the back. You can have the wires come out from positions A and B or from C.

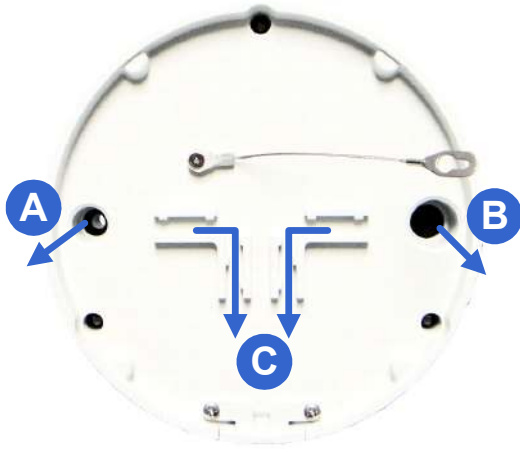


Figure 1-13

8. Secure the back plate to the ceiling.
 - A. Paste the sticker to the ceiling. The arrow on the sticker indicates the direction that the camera faces.

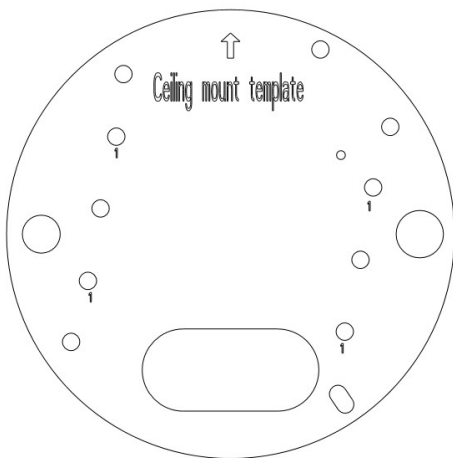


Figure 1-14

- B. Drill 4 holes for screws. The recommended ones are indicated as '1'.
- C. Insert the screw anchors to the 4 holes.
- D. Drill holes A & B or only hole C for sorting out the wires according to *Figure 1-13*.
- E. Secure the back plate to the ceiling with the supplied screws.

9. Secure the camera to the desired location.
 - A. Secure the safety lock to the camera with the screw you removed from the back plate in *Step 2*.



Figure 1-15

- B. Thread all the wires into the ceiling and connect them.
 - C. Secure the camera to the back plate with the supplied torx wrench.
10. Access the live view. See *2.3 Accessing Your Surveillance Image*.

11. Adjust the angle, focus and zoom of the camera.

Pan Adjustment



Tilt Adjustment



Rotational Adjustment



Zoom Adjustment

Loosen the screw



Focus Adjustment

Loosen the screw



Figure 1-16

12. Replace the silica gel bag, organize the wires and secure the camera cover with the torx wrench.



**Organize
the wires
to avoid
blocking
the lens**

Figure 1-17

1.5 Connecting the Camera



Figure 1-18

1. Use a standard network cable to connect the camera to your network.
2. Optionally connect an external microphone.
3. Connect power using one of the following methods:
 - Plug the power adapter to the power port.
 - Use the Power over Ethernet (PoE) function and the power will be provided over the network cable.
4. Optionally connect to input / output devices. For details, see *1.6 I/O Connector*.
5. The status LED of the camera will be on.

Note:

1. The speaker interface will be supported in the near future.
 2. The microphone interface only works with external microphone with power supply.
-

1.6 I/O Connector

The camera supports one digital input and one digital output of dry contact.

Pin	Supplied I/O Cable	Function
1	Green	Digital Output
2	Black	GND
3	White	Digital Input

For details on how to enable an installed I/O device, see [4.2.4 I/O Control](#).

Chapter 2 Getting Started

2.1 Looking Up the IP Address

By default, GV-VD8700 is assigned with a dynamic IP address by the DHCP server when the camera is connected to the network. This IP address remains unchanged unless you unplug or disconnect your camera from the network.

Note: If your router does not support DHCP, the default IP address will be **192.168.0.10**. In this case, it is strongly recommended to modify the IP address to avoid IP address conflict with other GeoVision IP devices on the same LAN. To change the IP address, see 2.2 *Changing the IP Address* later in this chapter.

Follow the steps below to check the GV-VD8700's dynamic IP address:

1. Download and install the **GV-IP Device Utility** program from <http://www.geovision.com.tw/download/product/>

Note: The PC installed with GV-IP Device Utility must be under the same LAN as the camera you wish to configure.

2. On the PC desktop, select **Start**, point to **Programs** and select **GV IP Device Utility**. The Utility window appears and automatically searches for the IP devices on the same LAN.

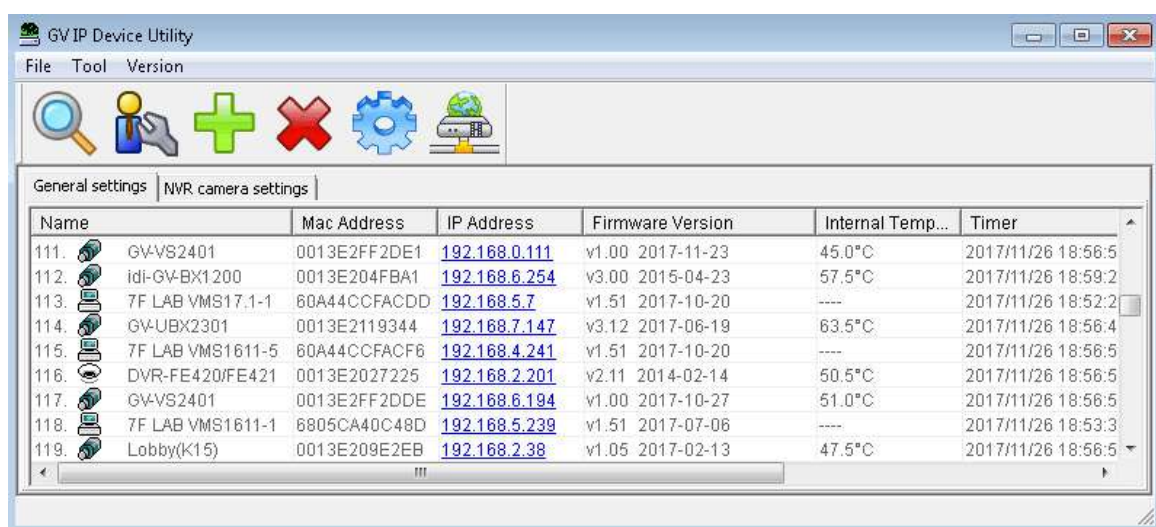


Figure 2-1

3. Click the **Name** or **Mac Address** column to sort.

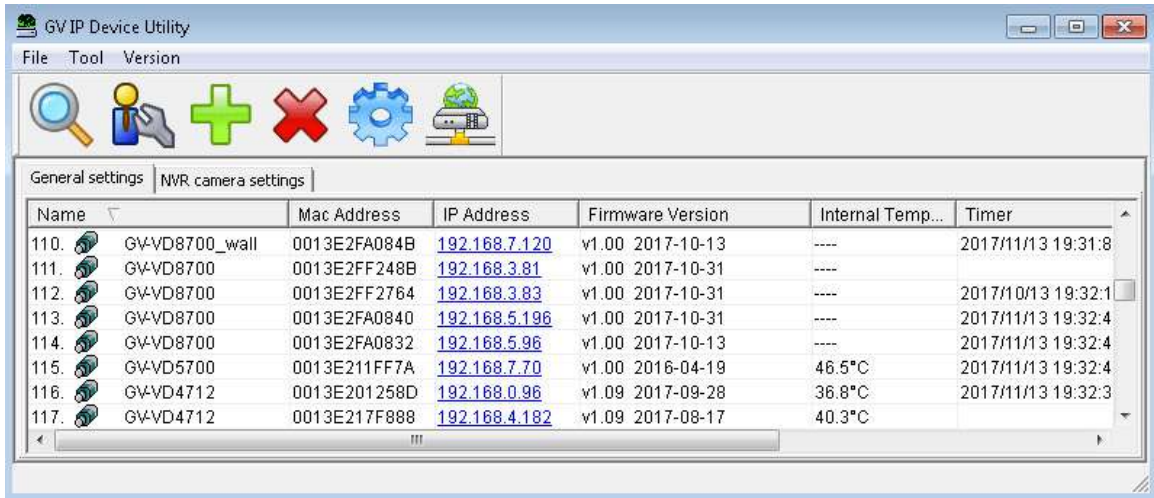


Figure 2-2

4. Find the Mac Address of the camera to see its IP address.

2.2 Changing the static IP Address

When the DHCP server on your network is unavailable or disabled, the camera can be accessed by the default IP **192.168.0.10**. To modify the static IP address, log in the Web interface to access the network setting page.

1. Open your Web browser, and type the default IP address <http://192.168.0.10>.
2. In both Login and Password fields, type the default ID and password **admin**. Click **Apply**.
3. On the top bar, go to **System Settings**. Select **Network** and click **LAN Configuration** to begin the network settings. This page appears.

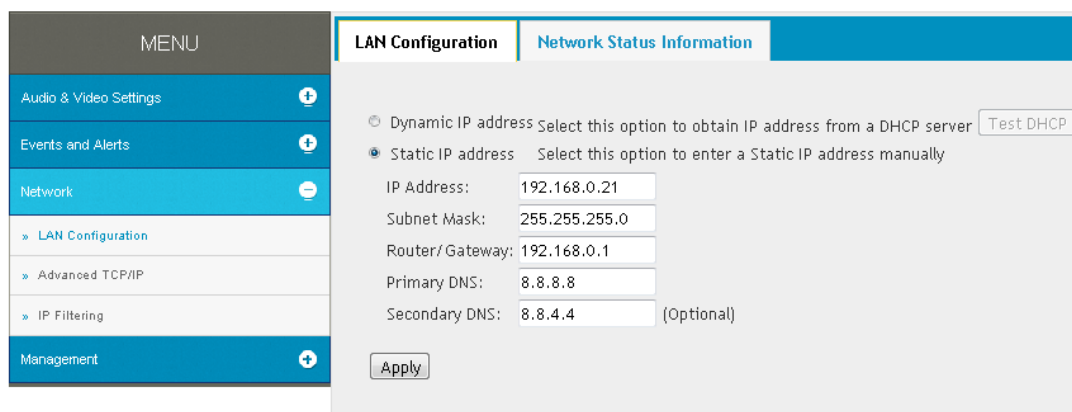


Figure 2-3

4. Select **Static IP address** and type the required network information.
5. Click **Apply**. The camera is now accessible through the static IP address.

IMPORTANT:

1. Use the dynamic DNS Service to obtain a domain name linked to the camera's changing IP address before you start using the dynamic IP address. For details on Dynamic IP Address, see *4.3.2 Advanced TCP/IP* and *4.3.1 LAN Configuration*.
 2. If **Dynamic IP Address** is enabled and you cannot access the camera, you may have to reset it to the factory default settings and perform the network settings again. To restore the factory settings, see *7.2 Restoring to Factory Default Settings*.
-

2.3 Accessing Your Surveillance Images

Two types of users are allowed to log on to the GV-VD8700: **Administrator** and **Guest**. The Administrator has full access to all system configurations, while the Guest can only access the live view and network status.

Once the camera is connected to the network, follow these steps to access your surveillance images:

1. Open the Internet Explorer browser.
2. Type the IP address or domain name of the camera in the **Location/Address** bar of your browser. To look up the IP address, see *2.1 Looking Up the IP Address*.
3. Enter the login name and password. The administrator account has unrestricted access to all the features and functions. The guest account is restricted to have the access of only the live view and network status information.
 - The default login name and password for Administrator are **admin**.
 - The default login name and password for Guest are **guest**.

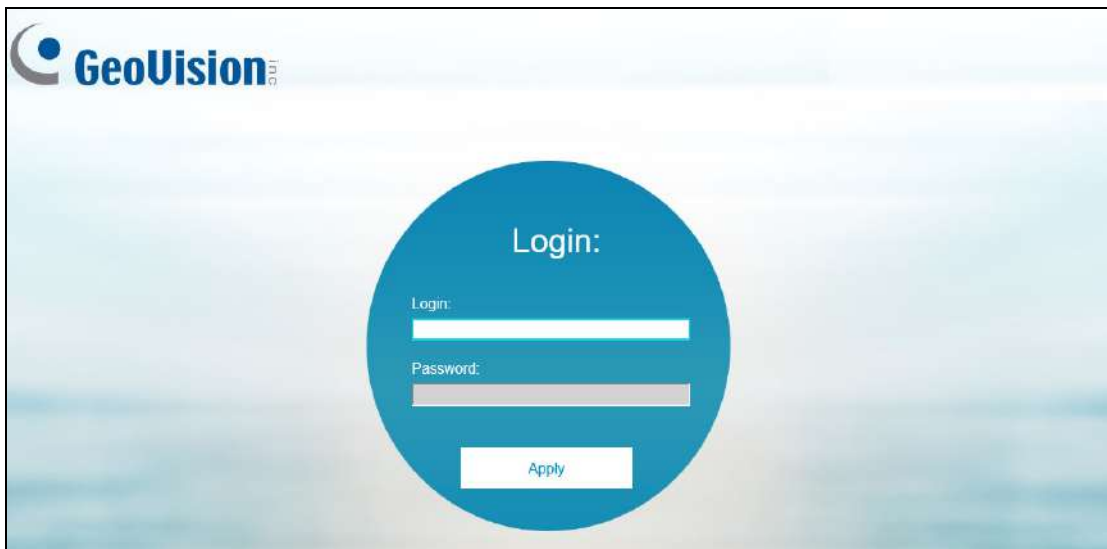


Figure 2-4

4. A video image, similar to the example below, is now displayed on your browser.

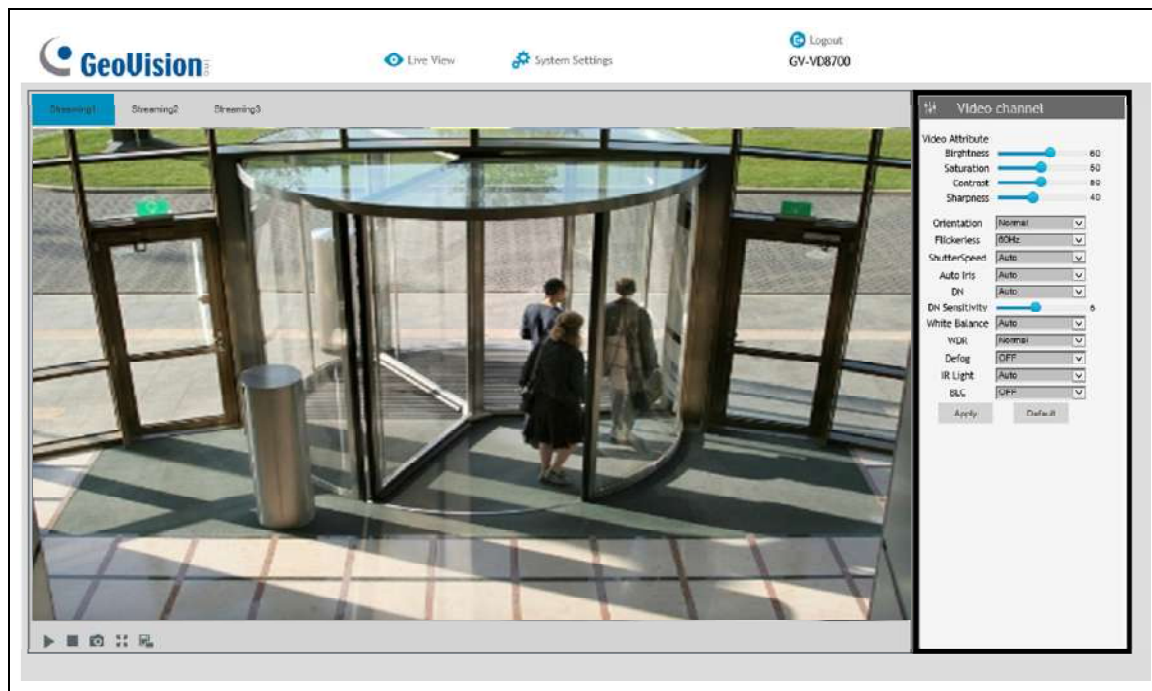


Figure 2-5

Note: To enable the updating of images in Microsoft Internet Explorer, you must set your browser to allow ActiveX Controls and perform a once-only installation of GeoVision's ActiveX component onto your computer.

2.3 Configuring the Basics

Once you have logged in to the GV-VD8700, you are ready to configure some of its primary settings through the Web interface:

- **Date and time adjustment:** see *4.4.1 Date & Time*.
- **Login and privileged passwords:** see *4.4.2 User Account*.
- **Network gateway:** see *4.3 Network*.
- **Camera image adjustment:** see *3.2 The Control Panel of the Live View Window*.
- **Audio settings adjustment:** see *4.1.2 Audio Settings*.
- **Video format, signal format, resolution and frame rate:** see *4.1.1 Video Settings*.

IMPORTANT: If you are using a 50 Hz flicker, set the **Flickerless** value to **50 Hz**. See *Video Attributes* in *3.2 The Control Panel of the Live View Window*.

Chapter 3 Accessing the Live View

3.1 The Live View Window

This section introduces the features of the **Live View** window and **Network Status** on the main page.

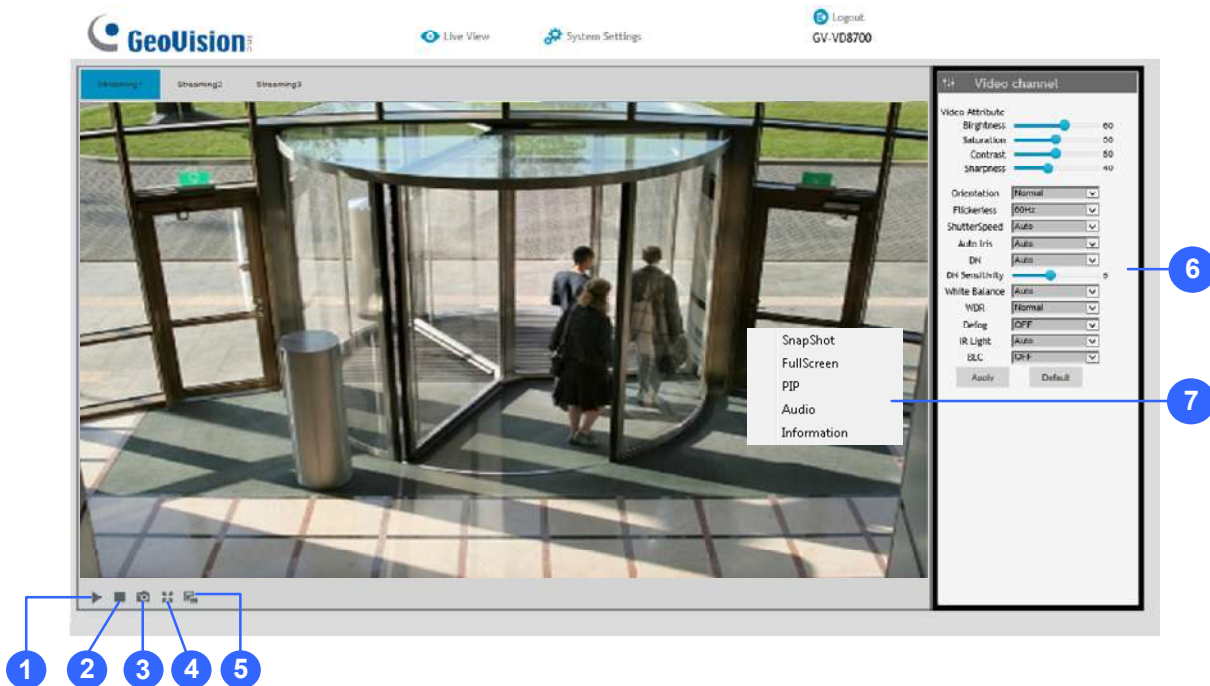


Figure 3-1

No.	Name	Function
1	Play	Plays live video.
2	Stop	Stops playing video.
3	Snapshot	Takes a snapshot of live video. --- See 3.3 <i>Snapshot of a Live Video</i> .

No.	Name	Function
4	Full Screen	Switches to full screen view.
5	File Save	Records live video to the local computer. --- See 3.4 <i>Video Recording</i> .
6	Control Panel	Adjust these image quality settings: Video Attribute, Orientation, Flickerless, Shutter Speed, Auto Iris, DN, DN Sensitivity, White Balance, WDR, IR Light, and BLC. --- See 3.2 <i>The Control Panel of the Live View Window</i> .
7	Pop-up Menu	On the Live View window, right-click the image to have these options: <ul style="list-style-type: none"> ■ Snapshot: Takes a snapshot of live videos. ■ Full Screen: Switches to full screen view. ■ PIP: Enables an inset window for a close-up view on the video. See 3.5 <i>Picture-in-Picture View</i>. ■ Audio: Receives audio from the surveillance site. ■ Information: Shows the information on codec, resolution, frames per second and transmission speed of the video stream.

3.2 The Control Panel of the Live View Window

The control panel is on the right side of the Live View window. You can adjust the settings of the following functions on the control panel. Note these settings are only accessible for Administrator.

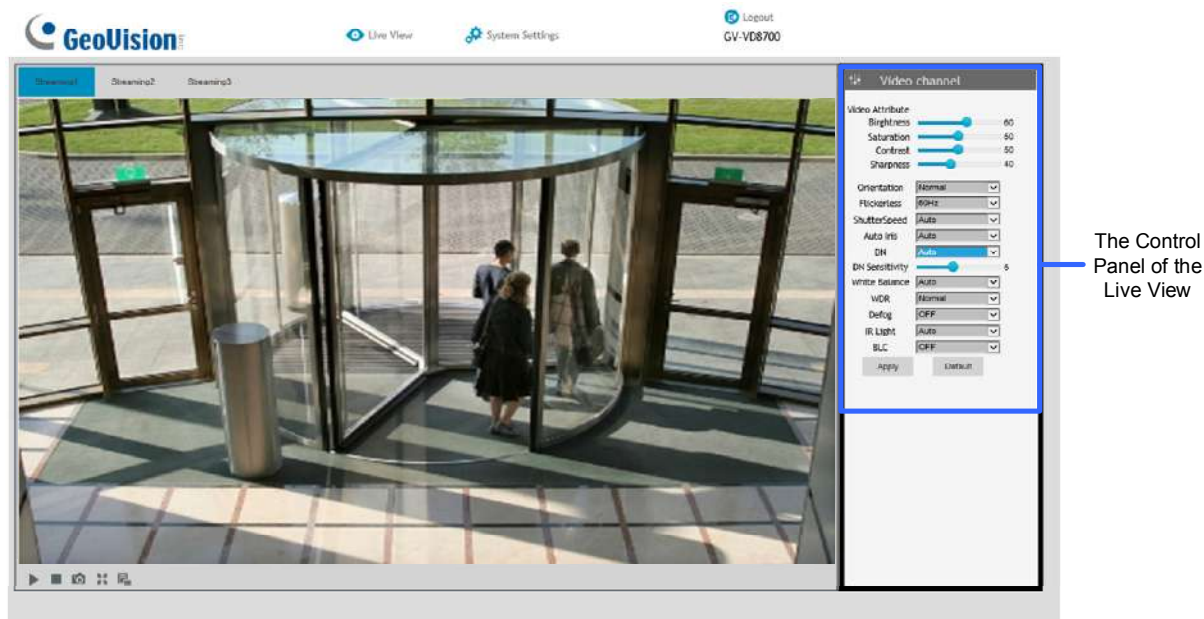


Figure 3-2

[Video Attributes] Adjusts the image quality settings.

- **Brightness:** Adjusts the brightness of the video image.
- **Saturation:** Adjusts the saturation of the video image.
- **Contrast:** Adjusts the relative differences between one pixel and the next.
- **Sharpness:** Adjusts the sharpness of the video image.
- **Orientation:** Changes the image orientation on the Live View window.
- **Flickerless:** The camera automatically matches the frequency of your camera's image to the frequency of indoor light sources, e.g. fluorescent lighting. You can also select 50 Hz or 60 Hz manually. If these don't match, faint light and dark bars may appear in your images. Check the power utility to determine which frequency is used at your area.

- **Shutter Speed:** Shutter speed controls the amount of light entering the image sensor and directly impacts the quality of image presentation. A slower shutter speed allows higher light exposure, which creates a brighter overall image and brings out background details, but blurs moving objects. A faster shutter speed is able to capture motion at the cost of lowering color and image clarity. The minimum shutter speed ranges from 1/30 to 1/8000 sec. In low light conditions, a fast shutter speed will lower color quality and image clarity. In this case, select the **Auto** option for automatic shutter control.
- **Auto Iris:** This function is enabled by default. Select **Auto** from the drop-down list when the scene appears fuzzy and the Flickerless function does not help to improve the situation. Select **Max** to set the aperture of the camera to its maximum regardless of the illumination of the environment.
- **D/N:** Select **Auto** for automatic switch between day mode and night mode depending on the amount of light detected. Select **Black and White** to switch the camera to night mode. Select **Color** to switch the camera to day mode. Sets the light sensor's sensitivity of switching between day mode and night mode, from 1 to 10. The higher the value, the more sensitive the camera is to light.
- **White Balance:** The camera automatically adjusts the color to be closest to the image you are viewing. You can choose one of the four presets: **Auto**, **Outdoor**, **Fluorescent**, and **Incandescent**. You can also choose **Manual** to adjust the white balance manually.
- **Wide Dynamic Range:** Adjusts and generates clear live view when the scene contains very bright and very dark areas at the same time. Select **Strong** to bring out details of the dark areas of the scene or **Normal** for a balanced effect.
- **Defog:** Select **Auto** to automatically enhance the visibility of images. Select **Off** to disable the function.
- **IR Light:** Select **Auto** to automatically enhance the visibility of images. Select **Off** to disable the function.
- **BLC:** Select **Auto** to automatically adjust the color intensity of scenes with strong light at the background.

Click **Apply** to save the configuration after the settings are completed. The changes take effect only after the configurations have been saved.

3.3 Snapshot of a Live Video

To take a snapshot of live video, follow these steps:

1. Click the **Snapshot** button (No. 3, Figure 3-1). The Save As dialog box appears.
2. Specify **Save in**, type the **File name** and select **JPEG** or **BMP** as **Save as Type**. You may also choose to display the camera name and/or the date, the text color and image quality of the snapshot.
3. Click the **Save** button to save the image in the local computer.

3.4 Video Recording

You can record live video to your local computer. To do so, follow the steps below:

1. Click the **File Save** button (No. 5, Figure 3-1). The Save As dialog box appears.
2. Specify **Save in**, type the **File name** and move the **Time Period** scroll bar to specify the time length of each video clips from 1 to 5 minutes.
3. Click the **Save** button to start recording.
4. To stop recording, click the **Stop** button (No. 2, Figure 3-1).

3.5 Picture-in-Picture View

The full screen mode provides a particular type of close-up view: **Picture-in-Picture (PIP)**. With the Picture-in-Picture (PIP) view, you can zoom in on the video to get a close-up view.



Figure 3-3

1. Right-click the live view and select **PIP**. An inset window appears.
2. Click the inset window. A navigation box appears.
3. Move the navigation box around in the inset window to have a close-up view of the selected area.
4. To adjust the navigation box size, move the cursor to any of the box corners, and enlarge or diminish the box.
5. To exit the PIP view, right-click the image and click **PIP** again.

Chapter 4 Administrator Mode

The Administrator can access and configure the GV-VD8700 over the network. The configuration categories include: **Audio & Video Settings**, **Event and Alerts**, **Network** and **Management**.

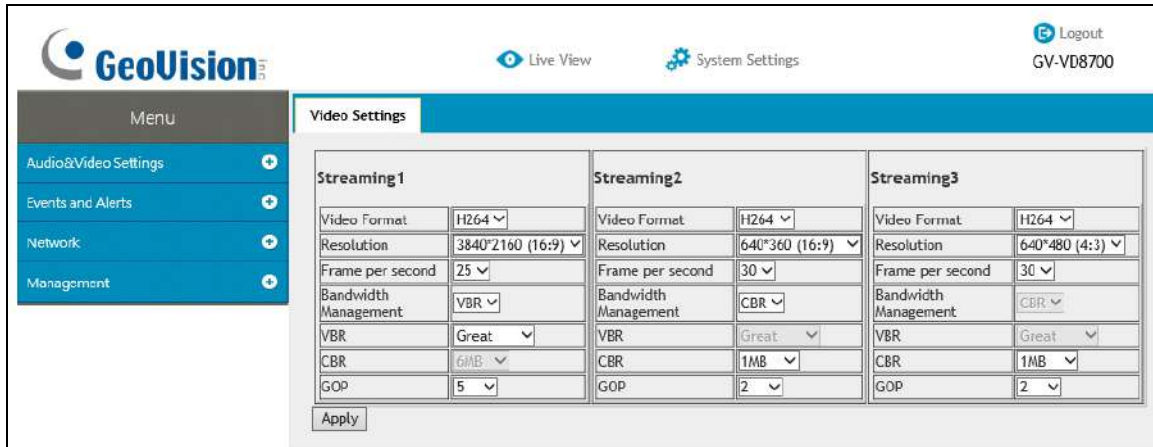


Figure 4-1

Corresponding Sections for Configuration Menu

Find the topic of interest by referring to the indicated section.

4.1 Audio & Video Settings	4.1.1 Video Settings 4.1.2 Audio Settings 4.1.3 RTSP 4.1.4 Privacy Mask 4.1.5 Text Overlay
4.2 Events and Alerts	4.2.1 Face Recognition 4.2.2 Tampering Alarm 4.2.3 Motion Detection 4.2.4 I/O Control 4.2.4.1 Input Settings 4.2.4.2 Output Settings 4.2.5 E-mail
4.3 Network	4.3.1 LAN Configuration 4.3.2 Advanced TCP/IP 4.3.3 IP Filtering
4.4 Management	4.4.1 Date and Time 4.4.2 User Account 4.4.3 Tools 4.4.4 External Storage Settings 4.4.5 System Log

4.1 Audio & Video Settings

The GV-VD8700 supports three streams, Streaming 1, Streaming 2, and Streaming 3, which allow separate codec and resolutions settings for a single video transmission. In a bandwidth-limited network, such as mobile phone surveillance, this multi-stream feature allows you to view live video in lower resolution and codec (Streaming 2 / Streaming 3), and record in highest resolution 3840 x 2160 and codec H.265 (Streaming 1) at the same time.

4.1.1 Video Settings

You can configure your video stream settings, such as H.264/H.265 video format, resolutions, frame rate, etc. or enable / disable streaming 2 and streaming 3 in Video Settings.

Video Settings	
Streaming 1	
Video Format	H265 ▾
Resolution	3840*2160 (16:9) ▾
Frame per second	25 ▾
Bandwidth Management	VBR ▾
VBR	Great ▾
CBR	6MB ▾
GOP	5 ▾
Apply	

Figure 4-2

Note: Streaming 3 is disabled by default. To enable streaming 3, change the video resolution of streaming 1 to 2560 x 1440 (16:9) or lower.

[Video Format] Select either **H.265** or **H.264** as codec type.

[Resolution]

Configure the resolution. The supported resolutions are listed below:

Streams	Ratio	Supported Resolution
Streaming 1	16:9	3840 x 2160, 2560 x 1440, 1920 x 1080, 1280 x 720
Streaming 2		1280 x 720, 640 x 360
Streaming 3		640 x 360
Streaming 1	4:3	2560 x 1920, 2048 x 1536, 1600 x 1200, 1280 x 960
Streaming 2		1024 x 768, 640 x 480, 320 x 240
Streaming 3		640 x 480, 320 x 240

[Frame per Second] Select a specific frame rate for video streams from the drop-down list.

[Bandwidth Management]

You can configure the bitrate settings to control bandwidth usage.

- **VBR (Variable Bitrate):** The quality of the video stream is kept as constant as possible at the cost of a varying bitrate. The bandwidth is much more efficiently used than a comparable CBR. Set the image quality to one of the 5 standards: **Poor, Fair, Good, Great** or **Excellent**.
- **CBR (Constant Bitrate):** CBR is used to achieve a specific bitrate by varying the quality of the stream. The bitrates available for selection depend on the image resolution.

[GOP]

Set the maximum number of seconds between every key frame. The default is 2 (seconds).

4.1.2 Audio Settings

You can enable the microphone and adjust the audio quality to **Low** or **Normal**. Select **Built-in Microphone** or **External Microphone** as the source of audio input.

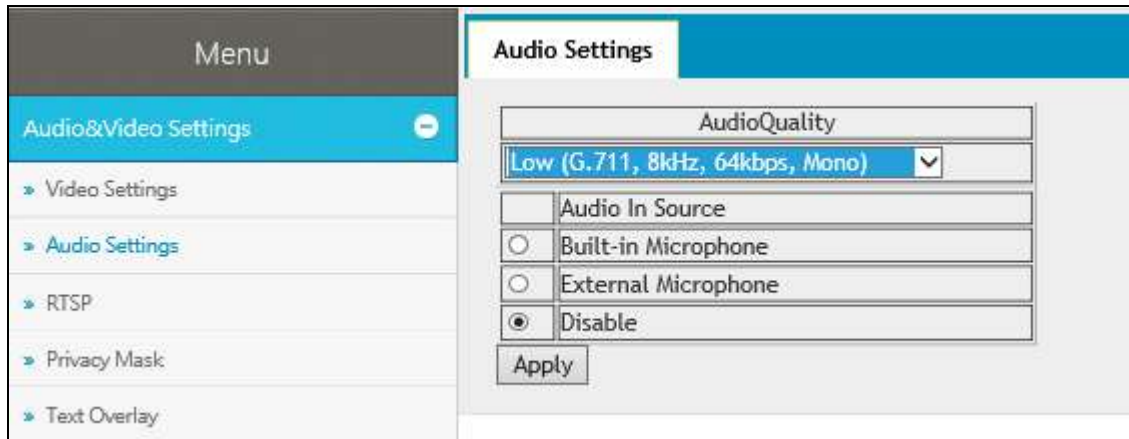


Figure 4-3

Note: The microphone input interface only works with external microphone with power supply. For details, see [1.5 Connecting the Camera](#).

4.1.3 RTSP

The RTSP enables video and audio streaming to your **3G-enabled** mobile phone. The RTSP streaming is enabled by default.

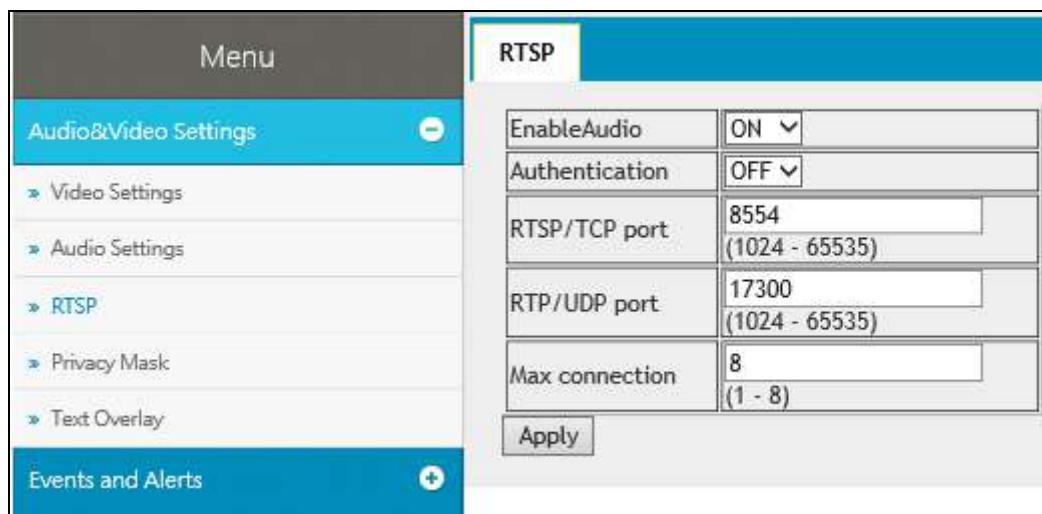


Figure 4-4

[Enable Audio] Turns audio streaming on or off.

[Authentication] The ID and password of the camera are required to access the camera through RTSP connections. This function is disabled by default.

[RTSP/TCP Port] Keep the default value 8554, or modify it if necessary.

[RTP/UDP Port] Keep the default range from 1024 to 65535, or modify it if necessary. The number of ports for use is limited to 20.

[Max Connection] Set the maximum number of RTSP and 3GPP connections to the camera. The maximum value is 8.

4.1.4 Privacy Mask

You can use the Privacy Mask to block out sensitive areas on live view and recorded clips. This feature is ideal for scenes with displays, keyboard sequences (e.g. passwords), and for anywhere else you don't want sensitive information visible.



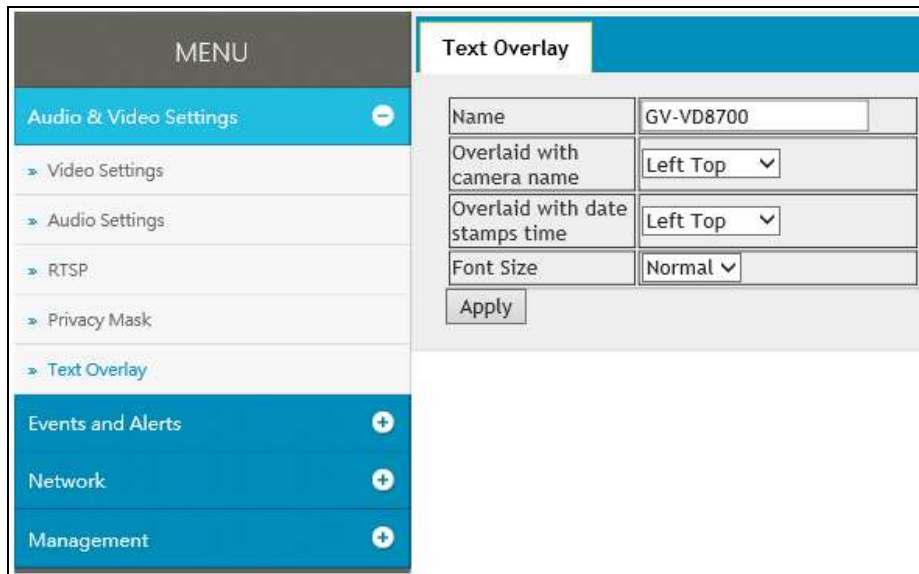
Figure 4-5

1. Drag the area(s) where you want to block out on the image.
2. Click **Apply** to save all the settings.
3. To delete the latest privacy mask you had marked, click **Delete**.
4. To delete all privacy masks you had marked, click **Reset** and click **OK**.

Note: You cannot set more than 4 privacy masks on the camera image.

4.1.5 Text Overlay

The Text Overlay allows you to overlay the camera name and date & time on the camera view. Up to 33 characters can be created on one camera view. The overlaid text will be saved in the recordings.



Text Overlay	
Name	GV-VD8700
Overlaid with camera name	Left Top
Overlaid with date stamps time	Left Top
Font Size	Normal
Apply	

Figure 4-6

[Name] Type the camera name in the **Name** field.

[Overlaid with Camera Name] Display the camera name on the designated area on the camera view. You can choose to place the text on the **Left Top**, **Left Down**, **Right Top** or **Right Down** of the camera view.

[Overlaid with date stamps time] Display the current date and time on the designated area on the camera view. You can choose to place the text on the **Left Top**, **Left Down**, **Right Top** or **Right Down** of the camera view.

[Font Size] Choose **Small**, **Normal** or **Big** fonts using the drop-down list.

4.2 Event and Alerts

For the events of motion detection, tampering alarm or I/O trigger, the Administrator can set up triggered actions to send a snapshot by e-mail and / or activate an output device.

To have above triggered actions, you must also set the following features:

- Tampering Alarm (See *4.2.2 Tampering Alarm*)
- Motion Detection (See *4.2.3 Motion Detection*)
- Input Setting (See *4.2.4.1 Input Settings*)

4.2.1 Face Recognition

You can configure the face recognition settings in this page. For details, see *5.3 Face Recognition Basic Settings*

4.2.2 Tampering Alarm

Tampering Alarm is used to detect whether a camera is being physically tampered. An alarm can be generated when the camera is moved, covered up, or out of focus. The alarm types include output triggers and email alerts.



Figure 4-7

1. Select the **Enable** option.
2. Enable **Dark Image** to trigger an alarm when the scene turns dark, e.g. when the lens of the camera is covered up. By default, this function is disabled.
3. Select the desired detection sensitivity under **Sensitivity**. The higher the value, the more sensitive the camera is to scene changes.
4. In the **Dwell Time when triggered (seconds)** field, specify the time length allowed for scene changes before an alarm is generated.
5. To trigger the e-mail alert when a tampering event occurs, enable **E-Mail Output**.
6. To trigger the output device when a tampering event occurs, enable **I/O Output**.
7. If you want the camera to ignore any movement or scene change in certain areas, click the screen to drag areas on the camera view. Click **Delete** to delete the latest masked area. Click **Reset** to delete all masked area.
8. Click **Apply** to save all the settings.

For details on setting up the e-mail server and output device, see [4.2.5 E-Mail](#) and [4.2.4.2 Output Settings](#).

4.2.3 Motion Detection

Motion detection is used to generate an alarm whenever movement occurs in the video image. You can configure up to 4 areas with different sensitivity values for motion detection. Set up at least one area to enable this function.



Figure 4-8

1. Select the desired sensitivity under **Sensitivity**. There are ten values. The higher the value, the more sensitive the camera is to motion.
2. Drag an area on the image.
3. To create several areas with different sensitivity values, repeat steps 1 and 2.
4. Click **Delete** to delete the selected areas.
5. Click **Reset** to delete all the selected areas.
6. Select **Enable** to activate the e-mail alert and / or output alarm.
7. Click **Apply** to save the above settings.

For details on setting up the e-mail server and output device, see [4.2.5 E-Mail](#) and [4.2.4.2 Output Settings](#).

4.2.4 I/O Control

After installing the I/O device, you need to enable the I/O settings on the camera. For installing the I/O device on the camera, see *1.6 I/O Connector*.

4.2.4.1 Input Settings

To activate the sensor input, select **Enable**.

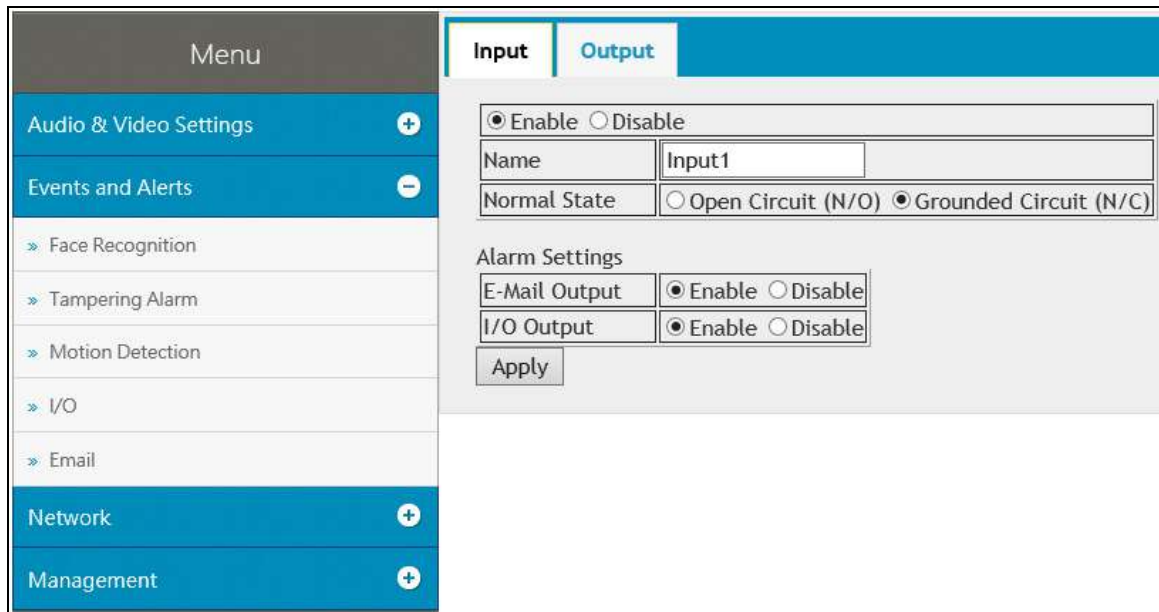


Figure 4-9

- **Name:** Name the input in the Name field.
- **Normal State:** Set the input state to trigger actions by selecting **Open Circuit (N/O)** or **Grounded Circuit (N/C)**.
- **E-Mail Output:** Enable this option to send alerts to a specified e-mail address when the input is triggered.
- **I/O Output:** Enable this option to trigger the output once the input is activated.

For details on setting up the e-mail server and output device, see *4.2.5 E-Mail* and *4.2.4.2 Output Settings*.

4.2.4.2 Output Settings

Select **Enable** to start the output device.

Menu	
Audio & Video Settings	+
Events and Alerts	-
» Face Recognition	
» Tampering Alarm	
» Motion Detection	
» I/O	
» Email	
Network	+
Management	+

Input	Output
<input type="radio"/> Enable <input checked="" type="radio"/> Disable	
Name	Output1
Normal State	<input checked="" type="radio"/> Open Circuit (N/O) <input type="radio"/> Grounded Circuit (N/C)
I/O OutputType	<input checked="" type="radio"/> Normal <input type="radio"/> Pulse
Pulse Time (seconds)	1
Apply	

Figure 4-10

- **Name:** Name the output in the Name field.
- **Normal State:** Choose the output signal that best suits your device: **Open Circuit (N/O)** and **Grounded Circuit (N/C)**.
- **I/O Output Type:** Choose **Normal** for the output to remain in effect until the trigger action stops. Or choose **Pulse** for the output to last only for the amount of time you specified.
- **Pulse Time (seconds):** Specify the time (seconds) for the pulse-type output to last.

4.2.5 E-mail

After an event is triggered, the GV-VD8700 can send an e-mail to a remote user containing a snapshot.

IMPORTANT: To send e-mail alert upon motion, be sure to set up the detection area on the Motion Detection page. For details, see [4.2.3 Motion Detection](#).

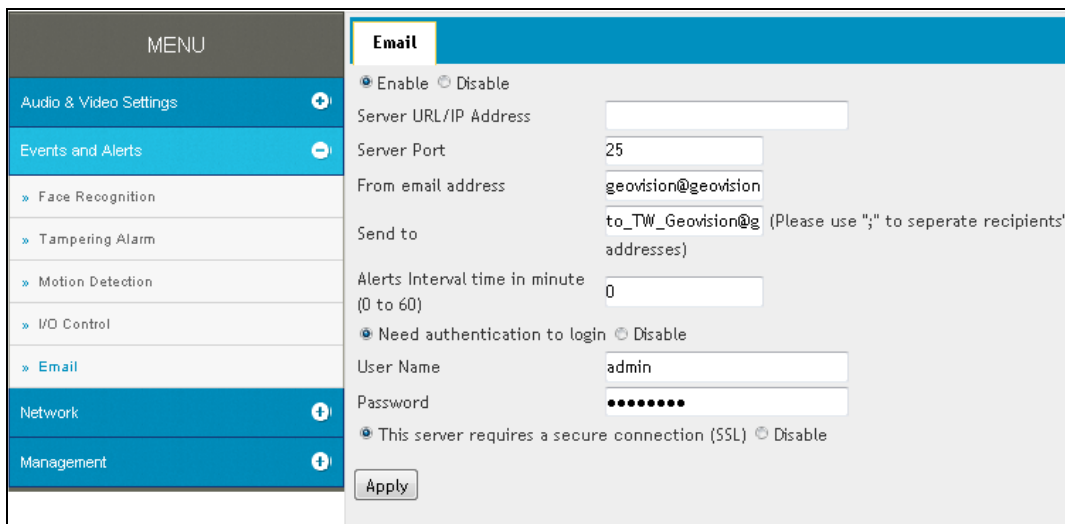


Figure 4-11

To enable the e-mail functions:

1. Select **Enable** to set up e-mail notifications.
2. **Server URL/IP Address:** Type the server's URL address or IP address.
3. **Server Port:** Type the server's port number. Or keep the default value 25.
4. **From email address:** Type the sender's e-mail address.
5. **Send to:** Type the e-mail address(s) you want to send alerts to.
6. **Alerts interval time in minute:** Specify the interval between e-mail alerts. The interval can be between 0 and 60 minutes. The option is useful for frequent event occurrence. Any event triggers during the interval period will be ignored.
7. If the server needs authentication, select **Need authentication to login** and type a valid **Username** and **Password** to log in to the server. If the server needs a secure connection (SSL), select **This server requires a secure connection**.
8. Click **Apply** to save the settings.

For related settings of e-mail alerts, see [4.2.2 Tampering Alarm](#), [4.2.3 Motion Detection](#), and [4.2.4 I/O Control](#).

4.3 Network

The Network section includes some basic but important network configurations that enable the GV-VD8700 to be connected to a TCP/IP network.

4.3.1 LAN Configuration

According to your network environment, select between **Static IP address** or **Dynamic IP address**.

Figure 4-12

[LAN Configuration]

- **Dynamic IP address:** The network environment has a DHCP server which will automatically assign a dynamic IP address to the camera. Click the **Test DHCP** to see the currently assigned IP address or look up the address using GV-IP Device Utility.
- **Static IP address:** Assign a static IP or fixed IP to the camera. Type the camera's IP address, Subnet Mask, Router/Gateway, Primary DNS server and Secondary DNS server.

Parameters	Default
IP address	192.168.0.10
Subnet Mask	255.255.255.0
Router/Gateway	192.168.0.1
Primary DNS server	8.8.8.8
Secondary DNS server	8.8.4.4

For details on Dynamic DNS Server Settings, see 4.3.2 *Advanced TCP/IP*.

[Network Status Information]

In this tab, you can view the current network status.

MENU	LAN Configuration	Network Status Information
Audio & Video Settings +	interface:	Wired
Events and Alerts +	IP Acquirement:	DHCP
Network -	MAC Address:	00-13-E2-FA-08-42
» LAN Configuration	IP Address:	192.168.4.33
» Advanced TCP/IP	Subnet Mask:	255.255.248.0
» IP Filtering	Gateway:	192.168.0.1
Management +	Domain Name Server 1:	8.8.8.8
	Domain Name Server 2:	168.95.1.1

Figure 4-13

4.3.2 Advanced TCP/IP

This section introduces the advanced TCP/IP settings, including DDNS Server, HTTP port, and HTTPS.

The screenshot displays the 'Dynamic DNS Server Settings' configuration page. On the left is a 'MENU' sidebar with categories: Audio & Video Settings (+), Events and Alerts (+), Network (-), LAN Configuration, Advanced TCP/IP, IP Filtering, and Management (+). The main content area has tabs for DDNS, HTTP, and HTTPS. Under 'Dynamic DNS Server Settings', there are radio buttons for 'Enable' (selected) and 'Disable'. The 'Service Provider' is set to 'Geovision GVDIP' with a link to 'Register Geovision DDNS Server'. The 'Host Name' field contains 'username.gvdip.com', 'User Name' contains 'admin.gvdip.com', and 'Password' is masked with dots. A 'Disable DDNS function' button and a 'Refresh' link are present. An 'Apply' button is at the bottom left.

Figure 4-14

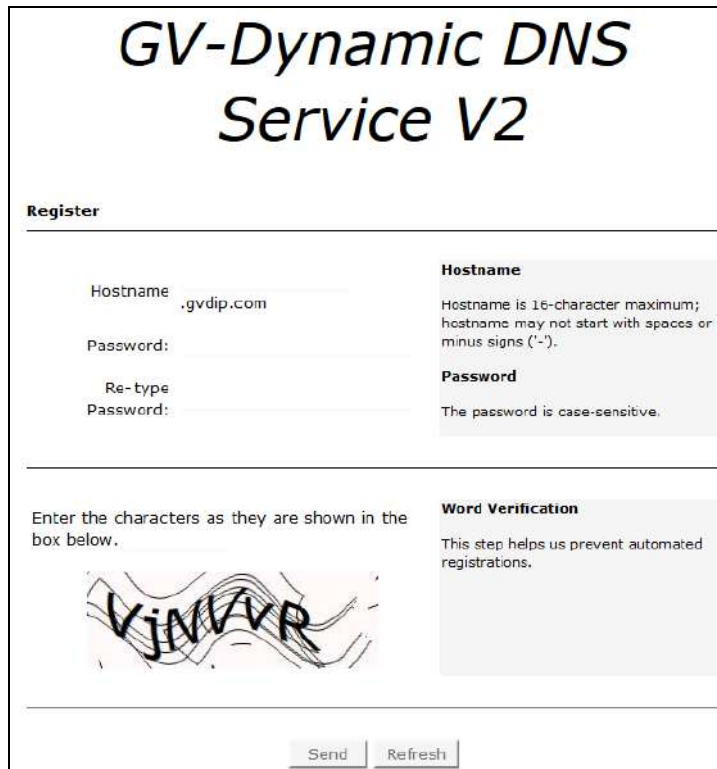
[Dynamic DNS Server Settings]

DDNS (Dynamic Domain Name System) provides a convenient way of accessing the GV-VD8700 when using a dynamic IP. DDNS assigns a domain name to the GV-VD8700, so that the Administrator does not need to go through the trouble of checking if the IP address assigned by DHCP Server or ISP (in xDSL connection) has changed.

Before enabling the DDNS function, the Administrator should apply for a Host Name from the DDNS service provider's website. There are 2 providers listed in the GV-VD8700: GeoVision GVDIP or DynDNS.org.

To enable the DDNS function:

1. Select **Enable**.
2. Select the DDNS service provider you have registered with. If you do not have a DDNS provider, you can click on **Register GeoVision DDNS Server** to register the service via **GeoVision DDNS V2** and obtain a host name.



GV-Dynamic DNS Service V2

Register

Hostname

Password:

Re-type Password:

Hostname
Hostname is 16-character maximum; hostname may not start with spaces or minus signs ('-').

Password
The password is case-sensitive.

Enter the characters as they are shown in the box below.

Word Verification
This step helps us prevent automated registrations.

Figure 4-15

3. Type the **Host Name** used to link to the GV-VD8700. For the users of GeoVision DDNS Server, it is unnecessary to fill the field because the system will detect the host name automatically.
4. Type the **User Name** used to enable the service from the DDNS. The user name should look similar to your host name. Depending on your service provider, you should add domain name (.dipmap.com, .gvdip.com or .org) after your user name, for example, alice.dipmap.com
5. Type the **Password** used to enable the service from the DDNS.
6. Click **Apply** to save the settings.

[HTTP Port Settings]

The HTTP port enables connecting the GV-VD8700 to the Web. For security integration, the Administrator can hide the server from the general HTTP port by changing the default HTTP port of 80 to a different port number within the range of 1024 through 65535.



Figure 4-16

[HTTPS Settings]

By enabling the Hypertext Transfer Protocol Secure (HTTPS) settings, you can access the camera through a secure protocol.



Figure 4-17

4.3.3 IP Filter

The Administrator can set IP filtering to grant or restrict access to the camera. Note that you can only set up 4 filter entries for the camera.



Figure 4-18

To enable the IP Filter function:

1. **Enable IP Filtering:** Enable the IP Filtering function.
2. **Filtered IP:** Type the IP address you want to grant or restrict access to.
3. **Action to take:** Select the action of **Allow** or **Deny** to be taken for the IP address(es) you have specified.
4. Click **Apply** to save the settings.

4.4 Management

The Management section includes the settings of date, time and user account. You can also view the firmware version and execute certain system operations.

4.4.1 Date and Time

The date and time settings are used for date and time stamps on the image.

Figure 4-19

[Date & Time on IP Camera] Displays the current date and time of the camera.

[Time Zone] Sets the time zone for local settings.

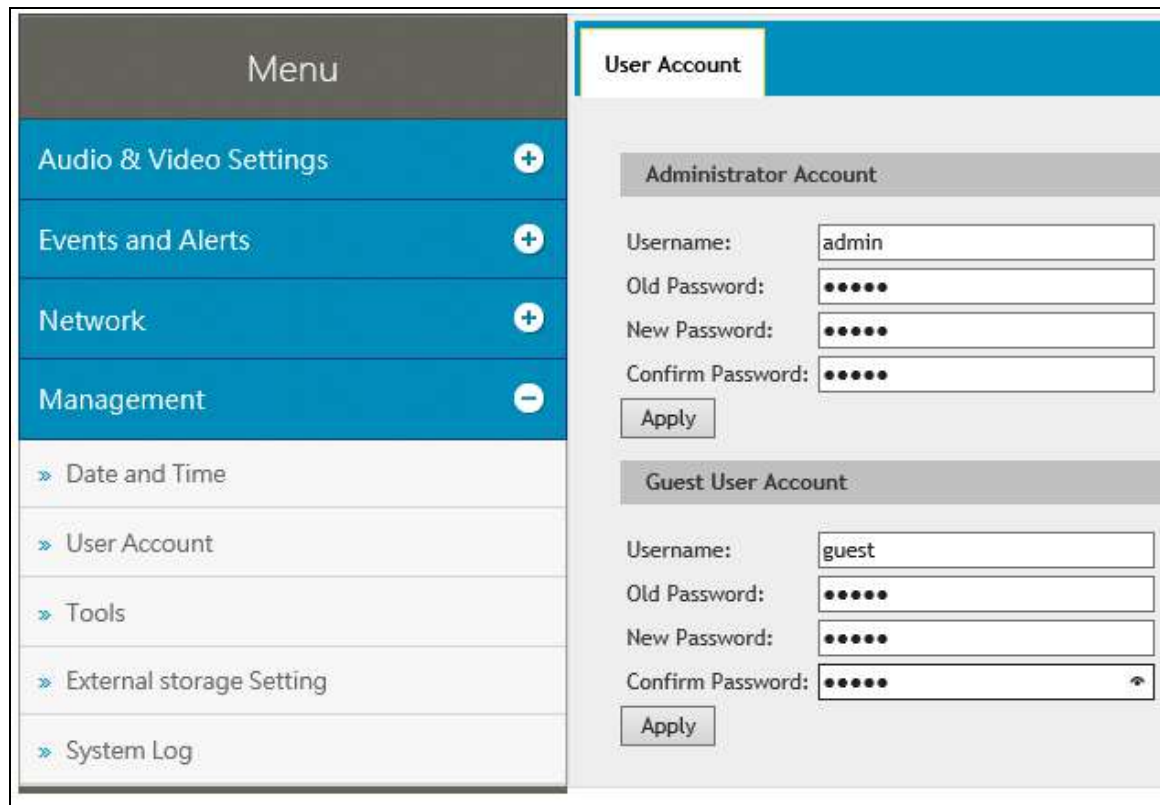
[Synchronized with a Network Time Server] By default, the camera uses the timeserver of `tw.pool.ntp.org` to automatically update its internal clock every 24 hours. You can change the host name or IP setting to the timeserver of interest. To change the time of automatic update, use the drop-down lists to specify the time.

[Synchronized with your computer or modify manually] Manually changes the camera's date and time. Or, select **Synchronized with your computer** to synchronize the camera's date and time with those of the local computer.

4.4.2 User Account

You can change the login name and password of Administrator and the Guest user accounts.

- The default Administrator login name and password are **admin**.
- The default Guest login name and password are **guest**.



Menu	User Account
Audio & Video Settings +	Administrator Account
Events and Alerts +	Username: <input type="text" value="admin"/>
Network +	Old Password: <input type="password" value="....."/>
Management -	New Password: <input type="password" value="....."/>
» Date and Time	Confirm Password: <input type="password" value="....."/>
» User Account	<input type="button" value="Apply"/>
» Tools	Guest User Account
» External storage Setting	Username: <input type="text" value="guest"/>
» System Log	Old Password: <input type="password" value="....."/>
	New Password: <input type="password" value="....."/>
	Confirm Password: <input type="password" value="....."/>
	<input type="button" value="Apply"/>

Figure 4-20

4.4.3 Tools

This section allows you to execute certain system operations and view the firmware version.

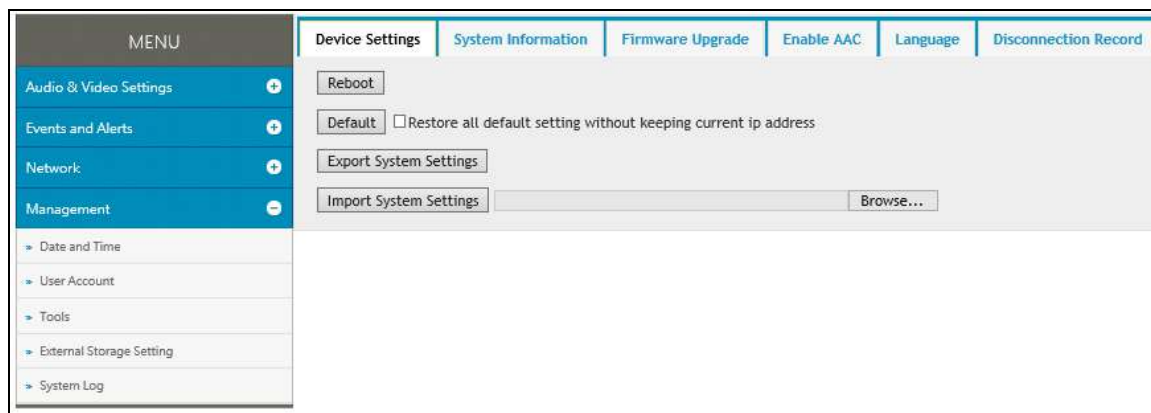


Figure 4-21

[Device Settings] You can reboot GV-VD8700, restore GV-VD8700 to its factory default settings, or import / export the system settings.

- **Reboot:** Click **Reboot** for the camera to perform a software reset.
- **Default:** Click **Default** to restore the camera to factory default settings.
- **Export System Settings:** Click to export the configurations of the camera to the local PC.
- **Import System Settings:** Click **Browse** to locate the system file (.config) and click **Import System Settings** to import previously saved configurations to the camera. Log in again after the Import completes.

[System Information] This field displays the firmware version of the camera.

[Firmware Upgrade] Upgrade the firmware over the Internet. For details, see *7.1 Upgrading System Firmware*.

[Enable AAC] Type the **Private Key** and click **Upload Private Key** to enable the support for AAC format audio.

Note: AAC support is a paid service. To acquire your Private Key, contact GeoVision sales representatives. A Private Key will be provided to you.

[Language] Select the language and click **Apply** to save the settings.

[Disconnection Record] When the camera is disconnected from GV-DVR / NVR / VMS, the recordings of alarm events will be temporarily saved to the camera's memory card. The recordings will later be uploaded to a predefined FTP server when the network connection is resumed. After all the recordings are uploaded to the FTP, the temporary recordings on the memory card will be removed.

IMPORTANT: Format the micro-SD card before its first use. For details, see [4.4.4 External Storage Settings](#)

- **Disconnection Record:** Select **On** to enable the service.
- **Video Time Interval (minutes):** Choose the duration time between **1, 2, 3, 4, or 5** minutes. When the recording starts once the camera is disconnected from GV-DVR / NVR / VMS, the camera will record videos for the specified time period.
- **Upload video to an FTP server:** Select **On** to upload the recordings to an FTP server. Type the settings of your FTP server in the following fields.
- **Server URL / IP Address:** Type the URL address or IP address of the FTP server.
- **Server Port:** Type the port number of the FTP server or keep the default value 21.
- **User Name:** Type a valid username to log into the FTP server.
- **Password:** Type a valid password to log into the FTP server.
- **Remote Directory:** Type the name of the storage folder on the FTP server.

4.4.4 External Storage Settings

You can view the memory card information in this page. Format the memory card before using it for the first time. After being formatted, the memory card will be ready to use. To insert or remove an SD card, see *1.3 Overview*.

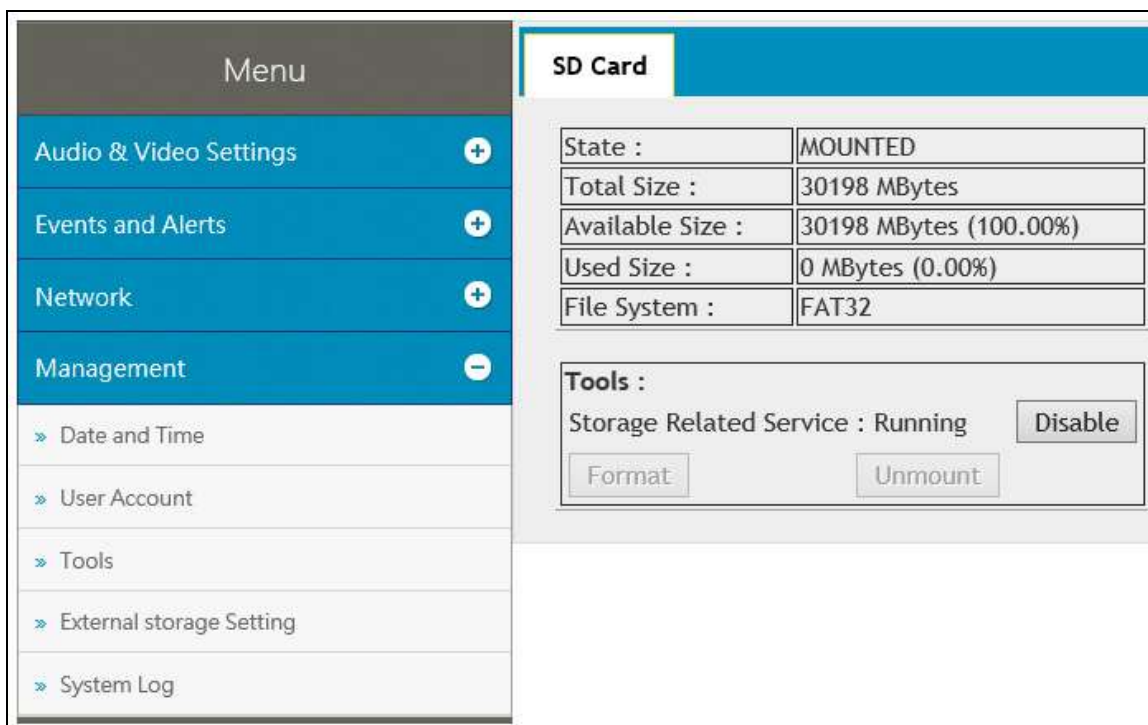


Figure 4-22

[Tools]

- **Disable:** When you click **Disable**, the recordings that are saved to the memory card and the snapshot of face recognition become inaccessible. The **Format** button and the **Unmount** button become active only when you clicked **Disable**.
- **Format:** Click **Format** to clear the content of SD card.
- **Unmount:** Click **Unmount** to disengage the SD card from the camera.

Note: The recording data may be lost if you remove the memory card during recording.

4.4.5 System Log

The log contains dump data that is used by service personnel for analyzing problems.

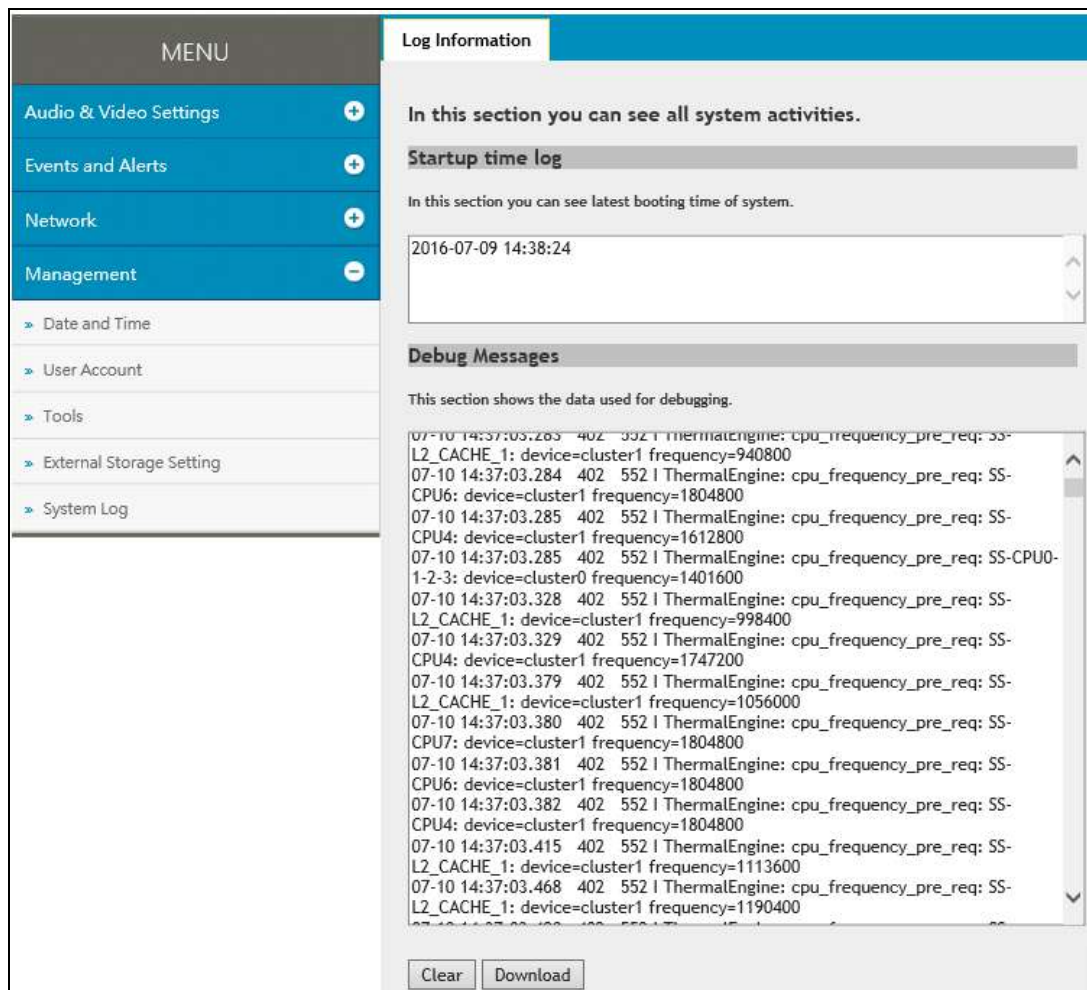


Figure 4-23

- **Clear:** Click **Clear** to delete all system logs.
- **Download:** Click **Download** to download all system logs to your computer.

Chapter 5 Face Recognition

GV-VD8700 can detect for and identify persons' faces from its predefined database. Upon successful recognition, the name of the person identified is displayed on the live view while the related data are recorded into the camera as a recognition event, as exemplified by the figure below. Those who are detected but failed to be recognized within the database are recorded as "unknown".

Read the following sections to learn how to improve the efficiency and accuracy of face recognition, particularly in regards to variables, such as the movement speed and facial direction of the recognition target. It is recommended to install the camera in places where the targets are facing right at the camera and remain focused for a maximized depth of field. It is also essential to arrange proper lighting conditions to avoid high contrast and backlighting that obscures the recognition target. See *5.2 Installation Flowchart* for a step-by-step guide of the installation.

Note that Face recognition is only supported by GV-VMS. When applying Face Recognition, one GV-VD8700 can only be connected to one GV-VMS at a time. See *Configuring Face Setting, Chapter 3, GV-VMS User's Manual*.

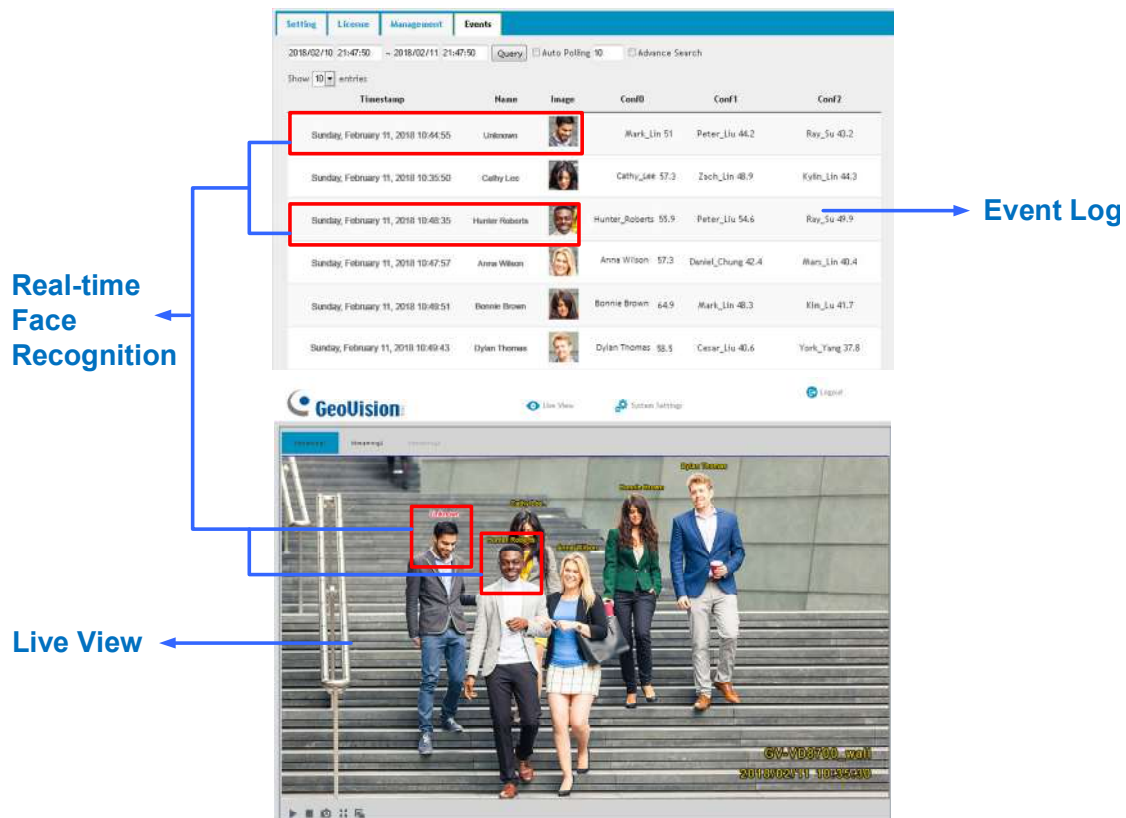


Figure 5-1

5.1 Features

- Store up to 10,000 face data entries
- Recognize up to 10 faces simultaneously
- Maximum recognition distance of 4 meters (13.12 ft)
- Minimum recognition time of 2 seconds
- Customizable group settings for e-mail alerts and output alarm (requires GV-VMS)
- Store up to 7 days of face recognition results and up to 3 GB of face recognition snapshots

5.2 Installation Flowchart

Follow the step-by-step guide to set up face recognition and refer to the relevant sections if needed.

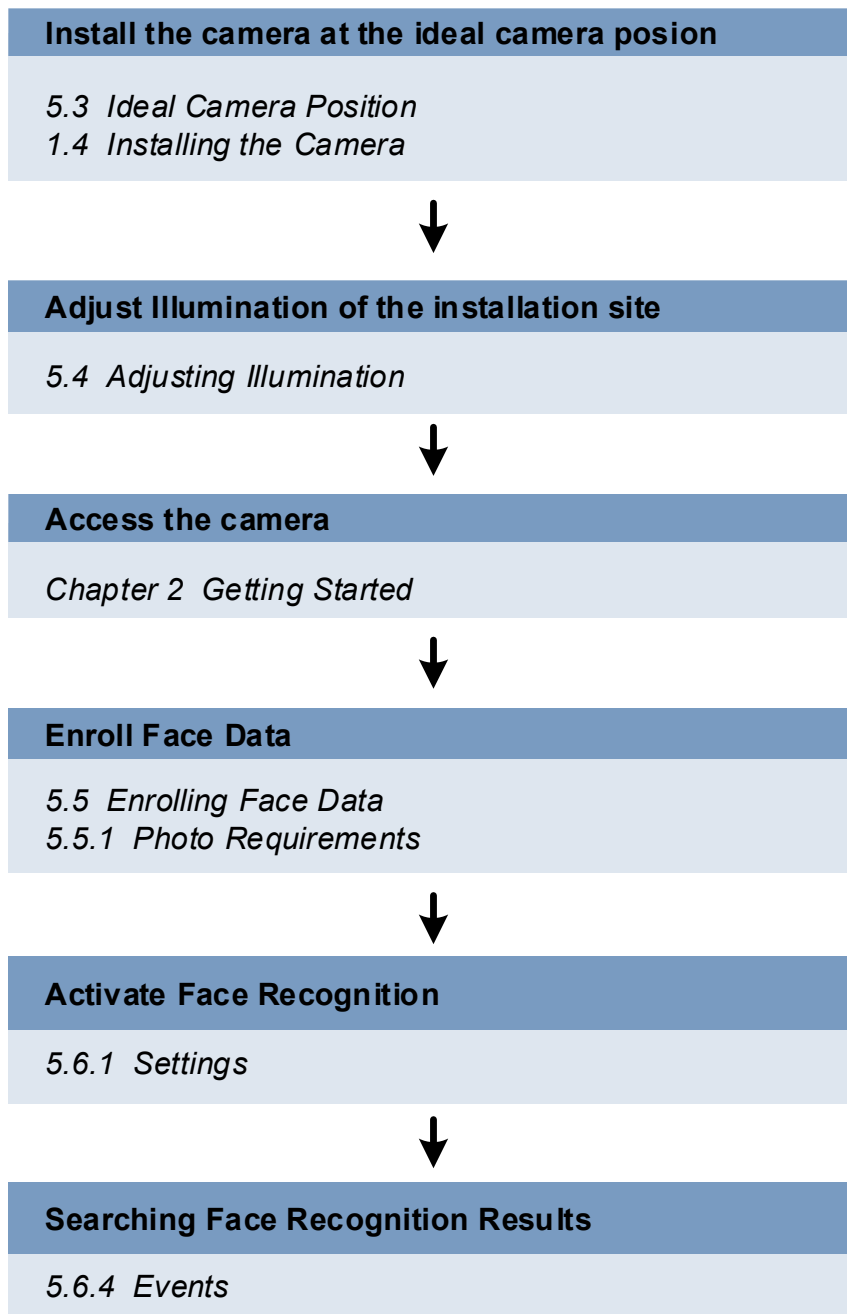


Figure 5-2

5.3 Ideal Camera Position

Face recognition works best when the camera is properly aligned with the face of the recognition target. When installing the camera, make sure to take the relevant environmental factors into account, such as height, distance, focus and range, to achieve optimal recognition results. A well-lit hallway is an example of an ideal location, where the direction of movements of the recognition targets can be easily predicted. Make sure you meet the criteria below when installing the camera:

Less Ideal Installation Scenario	Recommended Installation Scenario
A height of > 2 m or < 2 m	An approximate height of 2 m
A distance of > 4 m or < 4 m	An approximate distance of 4 m
Wide angle end	Telephoto end
> 15° of lateral deviation	< 15° of lateral deviation
Results	
Less Accuracy	Better Accuracy

- Height & Distance:** The more aligned the camera is to the front view of the face, the better the recognition results. Mount the camera at a 15-degree angle to the face of the recognition targets, or at a height of approximately 2 m (6.56 ft). The recognition result is at its best at a distance of approximately 4 m (13.12 ft).

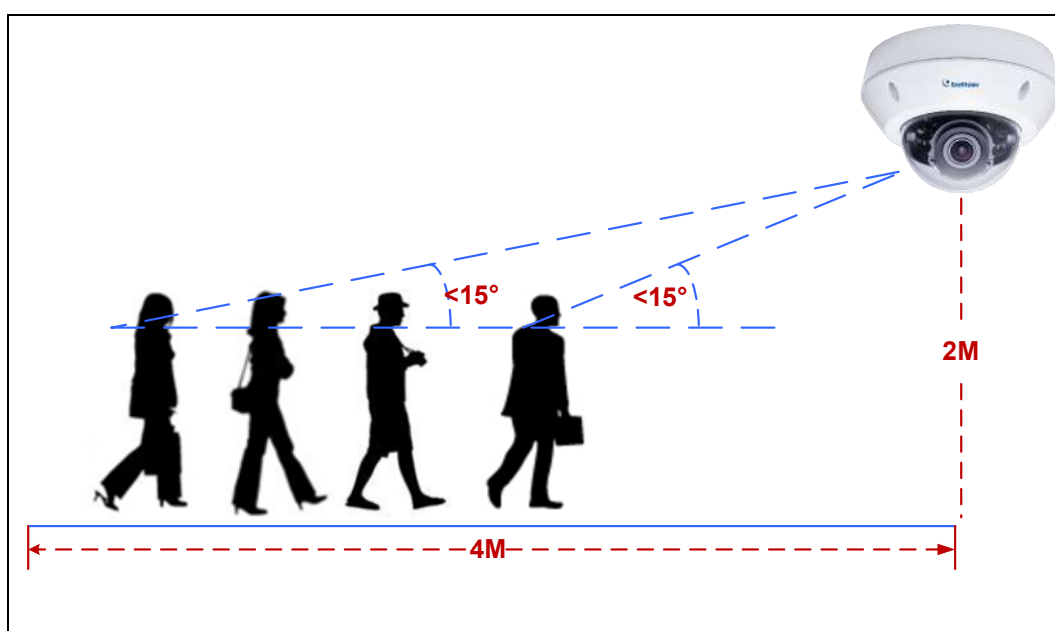


Figure 5-3

- **Focus:** A large depth of field not only ensures an appropriate image size for the faces of the recognition targets, but also allows them to stay in focus for a longer period of time, thereby increasing the recognition accuracy. Calibrate the lens at the telephoto end for effective recognition at its optimal recognition distance of 4 m (13.12 ft).



Figure 5-4

- **Range:** The recognition result is at its best when the target walks straight to the camera. When the target deviates laterally, recognition is still possible as long as **the target stays within a 15 degree range**. The camera is unable to recognize the faces when the deviation exceeds 15 degrees.

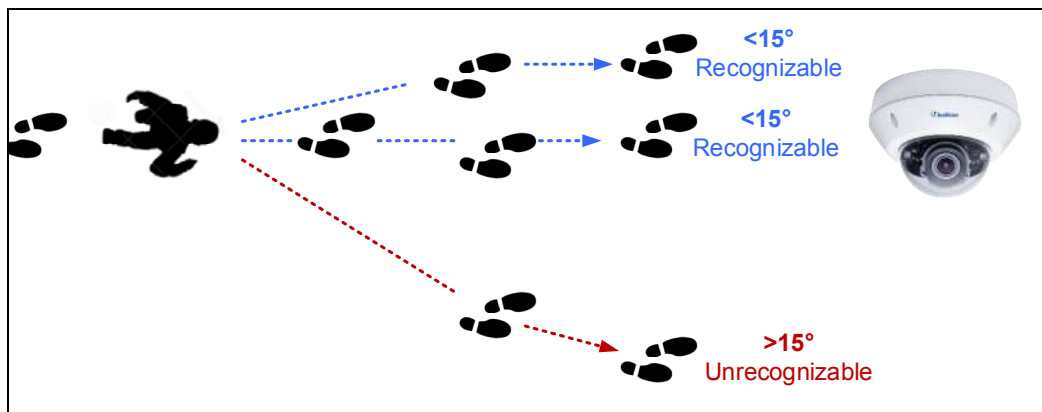


Figure 5-5

5.4 Adjusting Illumination

After installing the camera properly, it is required to adjust the environment's lighting since the recognition process may vary depending on the illumination. Follow the guidelines below to set up the environment's lighting according to **Daytime**, **Nighttime** and **Low Illumination (WDR)** recognition needs.

5.4.1 Daytime

Make sure the following criteria are met to achieve optimal recognition performance in daytime:

Less Ideal Installation Scenario	Recommended Installation Scenario
Insufficient Lighting	Sufficient Lighting
Fast Moving Target	Target Moving at a Constant Speed (1/60 Second Shutter Speed)
Results	
Less Ideal Recognition Performance	Best Recognition Performance

- **Lighting:** Sufficient light is required for effective recognition results, as moving targets often cause motion-blurred images under insufficient lighting.
- **Shutter Speed:** Adjust the shutter speed to 1/60 seconds manually when the camera is installed in places with high flow of people such as hallways.

5.4.2 Nighttime

If you found recognition results to be less optimal at night, you can use **extra IR LED tubes** as a lighting aid for the camera or **create extra face data under IR LED illumination**. Both methods can be applied to achieve optimal face recognition results at night.

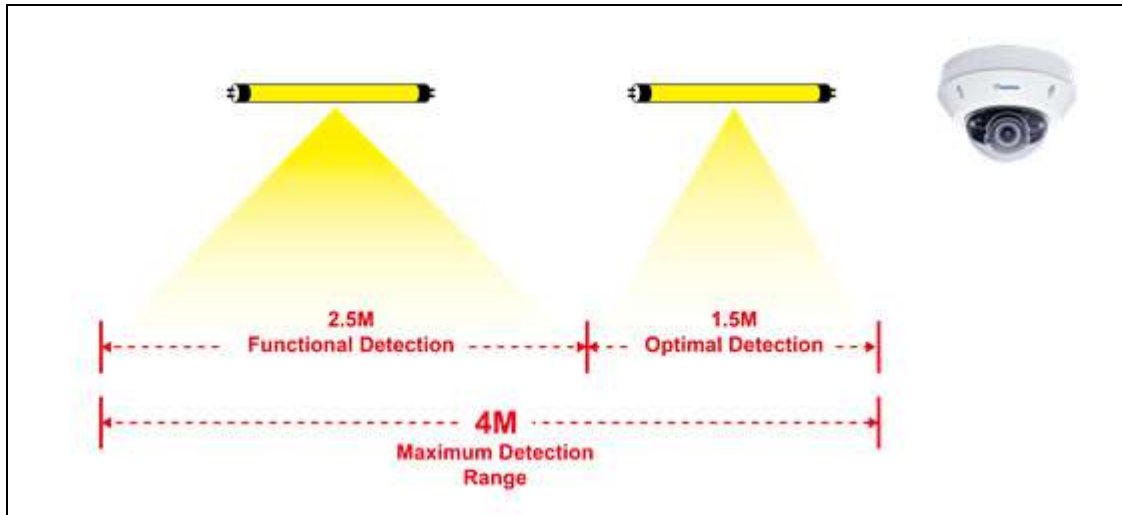


Figure 5-6

- **Extra IR LED Tubes:** Install additional IR LED tubes at the surveillance site to illuminate the recognition range.

Internal IR LED only



Relying solely on the internal IR LED can cause overexposure, which may lead to misrecognition

With the aid of extra IR LED Tube



Increasingly better recognition results occur under stable illumination of extra IR LED tubes.

Figure 5-7

- **Enroll face data under special light conditions:** Enroll additional face data for objects under IR LED illumination. See *5.5 Enrolling Face Data*.

5.4.3 Low Illumination (WDR)

Intense lighting contrast in an environment may cause ineffective recognition results. In this case, there are two ways to compensate for recognition accuracy:

- **Apply Wide Dynamic Range (WDR) or Back Light Compensation (BLC):** By default, the WDR function is enabled. If recognition results are still ineffective with the WDR on, adjust the **WDR** settings to **Strong** and enable the **BLC** settings. To adjust WDR or BLC settings, see *3.2 The Control Panel of Live View Window*.

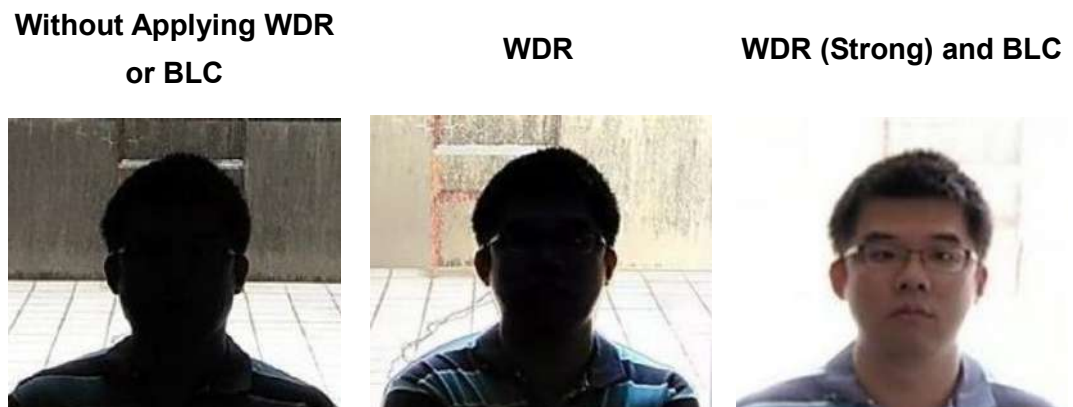



Figure 5-8

- **Enroll face data under special light conditions:** Enroll additional face data for objects under WDR and BLC illumination. See *5.5 Enrolling Face Data*.

5.5 Enrolling Face Data

After the camera and the environment's lighting are set, it is required to create the face data by adding photos of the persons to be recognized into the Face Database of GV-VD8700.

To enroll Face Data:

1. Click **System Settings**. Then in the left menu, click **Events and Alerts**, select **Face Recognition** and click the **Management** tab.
2. Click **Add New Record**  on the upper-right corner. A dialog box appears.

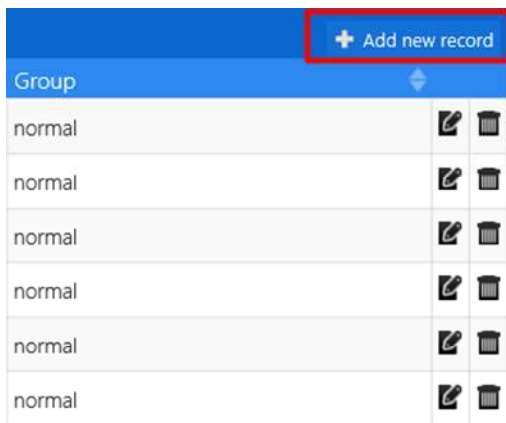



Figure 5-9

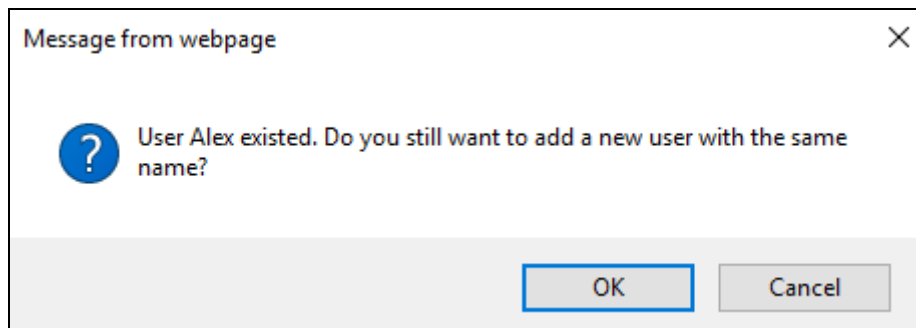
3. Fill out the following information:

Figure 5-10

- **Name:** Type a desired name for the person.
 - **Organization:** Type a desired organization name for the person.
 - **Group:** Select from a list of ten groups in which the person shall be categorized under. The ten groups include **Allowed**, **Disallowed**, **Normal** and **Group 4 to 10**.
 - **Browse:** Click to add portrait photos or snapshots, as face recognition data, for the person. Make sure the photos meet all of the requirements as specified in 5.5.1 *Photo Requirements*.
4. Click **Save** to save the face data. If the photo(s) selected don't meet the required criteria, an **Error** message will appear.
5. To add photos to or edit an existing profile, click the **Edit Record** icon  in Figure 5-9.

Note:

1. You can use the Group setting to trigger e-mail alerts and output alarms. The output alarms to be triggered by Group setting needs to be configured with a GV-I/O Box connected to GV-VMS. See *Configuring Face Setting, Chapter 3, GV-VMS User's Manual*.
2. Groups 4-10 appear only when the camera is connected to GV-VMS V17.1 or later and the Face Recognition function is activated.
3. You can only change the group name through GV-VMS V17.1 or later.
4. It is possible to create two face data with identical names in the database. In this case, simply click **OK** when you are prompted by the pop-up message.



5.5.1 Photo Requirements

For face recognition to work, it is required for the photos to meet the following criteria:

- Each photo should consist of only one face.
- Size of the face in the photo is around 120 ~ 250 pixels.
- The file size of the photo cannot exceed 350 KB.
- Only JPG / JPEG format is supported.
- Make sure the face of the person does not occupy more than 50% of the image.

See the examples below:

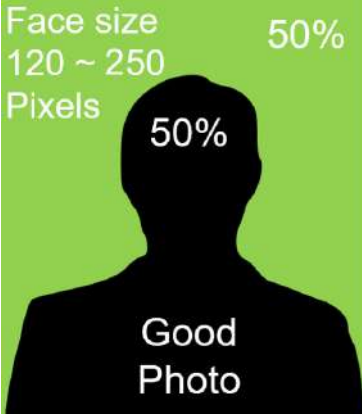


Best Example	Example of Failure - 1	Example of Failure - 2
		
<p>The face occupies 50% of the image. The size of the person's face is around 120 ~ 250 pixels.</p>	<p>The face occupies more than 50% of the image.</p>	<p>The size of the person's face is less than 120 pixels.</p>

Figure 5-11

The accuracy of the face recognition can be improved by conforming to the suggestions below:

- Enroll 5 or more photos for each person with different angles
- Make sure the lighting is sufficient to reduce shadows on faces.
- Avoid glare from the glasses that obscures the eyes.
- Take the photo of the person from a distance of about 1 ~ 1.5 meters (3.2 ~ 4.9 feet) away from the camera to minimize image distortions.

More photos with different variations and under different lighting conditions can increase the recognition performance. It is recommended to include at least a **front view (close view and distant view)**, a **tilted-left view**, a **tilted-right view**, and a **20 degree view from above view** per face ID.






Front View (Close View)	Front View (Distant View)	Tilted-Left View	Tilted-Right View	20 Degree View from above view
				

Figure 5-12

See the table below for more examples. You can enroll a maximum of **20** photos per Face ID.





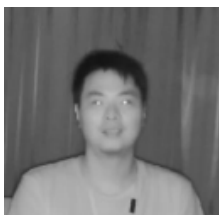
Smiling View	Glasses Removed view	20 Degree View from below	Internal IR LED (with Glasses)	Internal IR LED (Glasses Removed)
				

Figure 5-13

Note: You can take the portraits with different sources of light, such as IR LED, WDR or Back Light Compensation.

Certain articles and / or angle of view may pose limitations to the accuracy of face recognition. See *Appendix B. Limitations to Face Recognition* to avoid them if the recognition results are still ineffective.

Using Snapshots

If for any reason standard portrait photos cannot be taken, you can increase the recognition performance by using snapshots taken from the surveillance site. Possible scenarios may include:

- **Nighttime Recognition:** where the installation site may not be subjected to IR LED enrollment conveniently.
- **Special Entities:** who are unwelcomed or who refuse to comply with the standard enrollment process.
- **Frequently Misrecognized Entities:** whose personal photos were not taken properly, which leads to deficient recognition results.

To use **snapshots from live videos**, see *3.3 Snapshot of a Live Video*.

To use **snapshots from recorded videos**, see *3.4 Video Recording*. Capture the desired image and use it as the source for face data enrollment.

To use **snapshots from events**, go to **Event and Alerts** and click **Events**. Right-click the snapshot under **Image** (Snapshot of Events, Figure 5-17) and click **Save image as...** to save the cropped image as the future source for face data enrollment. See *5.6.4 Events*.

After the snapshots are saved, edit them so that they meet the requirements as specified in *5.5.1 Photo Requirements*.

5.6 Face Recognition Basic Settings

5.6.1 Settings

After the camera is installed, select **Enable** to activate face recognition and click **Apply**.

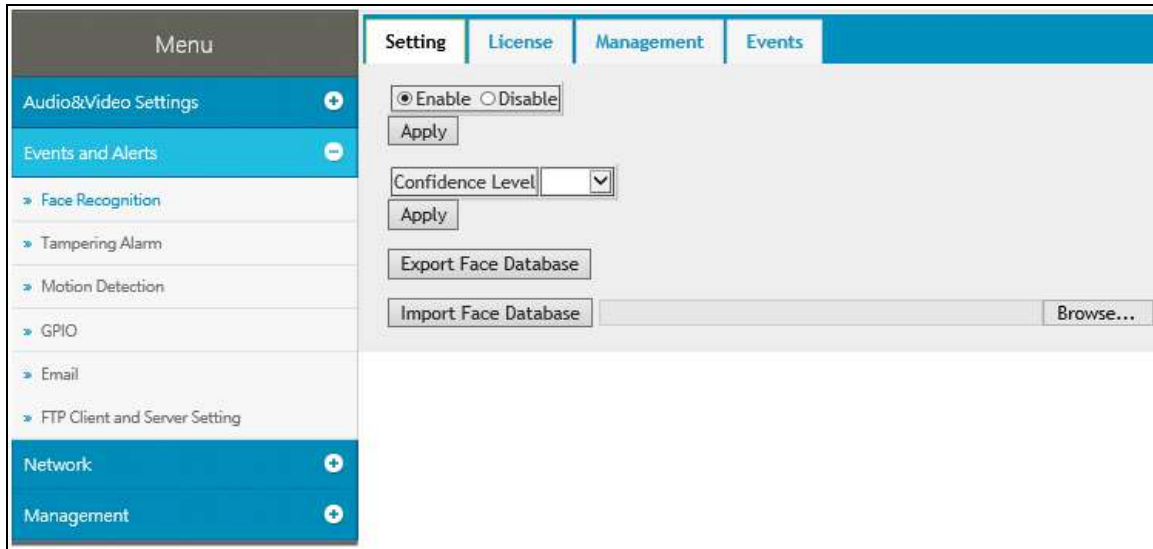


Figure 5-14

[Confidence Level] Select the confidence level from the drop-down list for different precision requirements.

- At level 50, the camera identifies similar faces from the face database when a person passes by.
- At level 55, the camera recognizes the passing person with increased accuracy.
- At level 60, it is required for the person to be seen directly in front of the camera at a proper distance with his / her face captured under good lighting condition for the recognition to work.

[Export Face Database] Export the face database of the camera into a zip file and save it on your PC, to be backed up or used for other cameras.

[Import Face Database] Import a face database into the camera.

IMPORTANT:

1. Importing a face database into the camera will replace the existing database. Back up the existing database before importing a new database into the camera.
 2. After the new database is imported, make sure that your local computer is supported by Adobe Flash Player. Otherwise, the face database (Figure 5-16) and event log (Figure 5-17) will become inaccessible.
-

5.6.2 License

The license key is programmed by default. When the license key is programmed properly, the settings page will show **Face recognition license activated**.

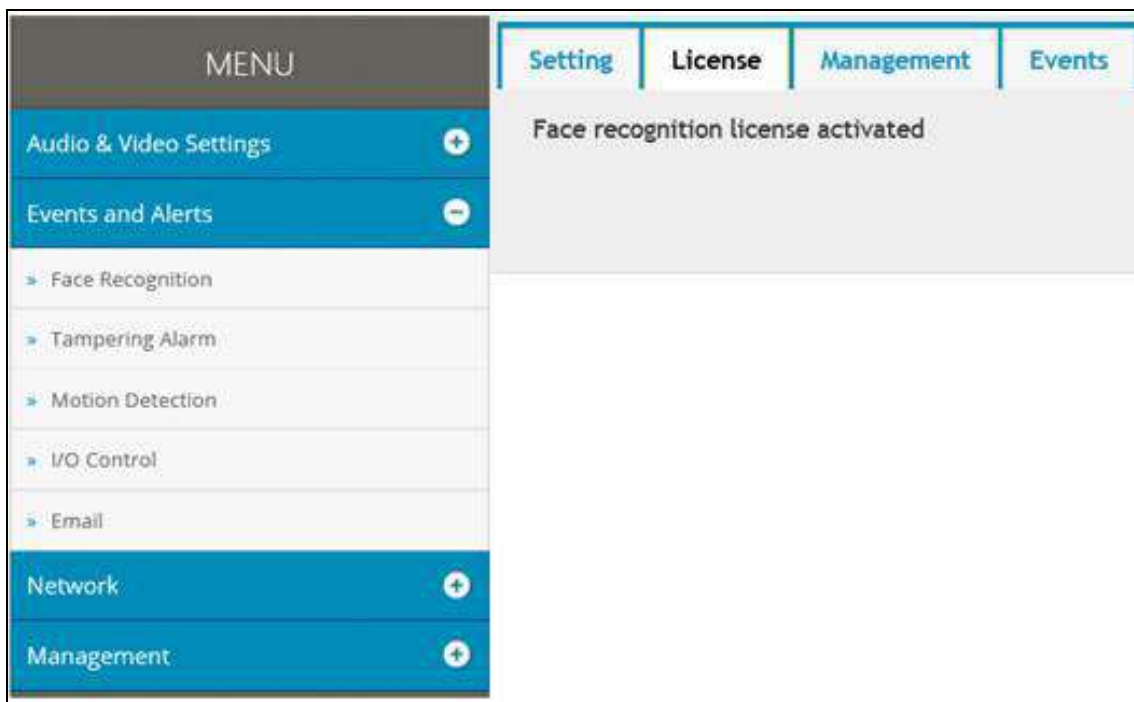


Figure 5-15

5.6.3 Management

In the **Management** section, you can enroll, review, search and edit the enrollment data of a specific entity, including pictures and name.

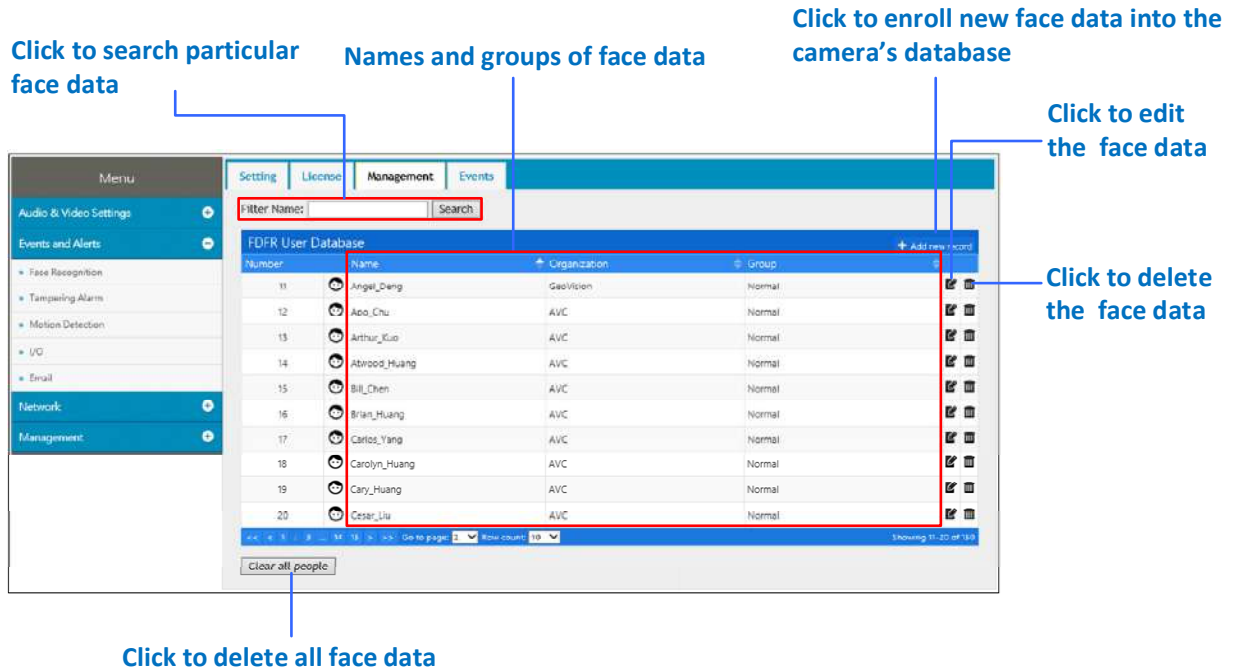



Figure 5-16

[Filter Name] Type **Name** and click **Search** to retrieve the face data of a particular person.

[Add new record] Click to create new face data. See 5.5 Enrolling Face Data.

[Edit] Click the  button to edit the face data. See 5.5 Enrolling Face Data.

[Delete] Click the  button to delete the face data.

[Clear all people] Click the button to delete all face data in the face database.

Note: When using the Search function, the results will include all entries containing the keyword searched for, unless further specified. Suppose the face database contains entries of “Alvin Martin” and “Alvin Huang”, both results are shown when using “Alvin” as the keyword. When the keyword is further specified as “Alvin Huang”, “Alvin Martin” is excluded from the search results.

5.6.4 Events

In the **Events** section, you can view, search and access the face event log and history. The camera keeps the events for 7 days or up to 160,000 events. After reaching either the 7 days or the 160,000 events quota, the oldest event is recycled. Make sure you conform to the following integration specifications when configuring the recognition event log using GV-VMS:

- When applying Face Recognition, one GV-VD8700 camera can only be connected to one GV-VMS host at a time.

The screenshot shows the 'Events' section of the GV-VMS interface. It includes a search bar with date and time filters, a 'Query' button, and a table of events. The table has columns for Timestamp, Name, Image, Conf0, Conf1, and Conf2. Annotations with blue lines point to specific parts of the interface:

- Closest Match in the camera's database:** Points to the Conf0 column.
- Second Closest Match in the camera's database:** Points to the Conf1 column.
- Third Closest Match in the camera's database:** Points to the Conf2 column.
- Event Time:** Points to the Timestamp column.
- Target's Name:** Points to the Name column.
- Snapshot of Event:** Points to the Image column.

Timestamp	Name	Image	Conf0	Conf1	Conf2
Tuesday, November 28, 2017 15:14:10	Unknown		Young_Huang 33.8	Neo_Hsiao 32.8	Mike_Wu 32.2
Tuesday, November 28, 2017 15:15:35	Unknown		Michael_Liang 33.9	Louis_Wang 32.7	Elvis_Hong 32.4
Tuesday, November 28, 2017 15:15:36	Louis_Liang		Jason_Su 47.2	Max_Yang 35.2	Pervez_Musharraf 31.9
Tuesday, November 28, 2017 15:15:42	Tony_Jiang		Jason_Su 54.3	Vito_Mao 45.1	Odaru_Chen 39.1

Showing 11 to 20 of 45 entries. Previous 1 2 3 4 5 Next. Clear all events.

Figure 5-17

To search for log data:

1. Specify the **Start Time** and **End Time** of the log data.
2. Click **Query** to display the search results.
3. Choose to display **10**, **25**, or **50** query entries from the drop-down list.
4. To locate specific events, select **Advanced Search**. The search field appears.

Filter Name:	<input type="text"/>
Filter Group:	None <input type="button" value="v"/>
Filter Organization:	<input type="text"/>
Filter Confidence Name:	<input type="text"/> Min Score: <input type="text"/> Max Score: <input type="text"/>

Figure 5-18

- **Filter Name:** Type the name of the person to filter for the person's recognition events.
- **Filter Group:** Select among **Normal**, **Allowed**, **Disallowed**, and **Group 4-10** from the drop-down list to show the event log of all persons who belong to that group.
- **Filter Organization:** Type the organization to display all events with the members belonging to that organization.
- **Filter Confidence Name:** Type the name of the person and specify the confidence interval, from **Min Score** to **Max Score**, in which it is searched for. For instance, if *Jack* is searched with a *Min Score of 0* and *Max Score of 1*, all results of Jack recorded under **Conf0** to **Conf1** will be displayed.
 - **Conf0:** The closest match, of Face ID from the database, to the recognition event.
 - **Conf1:** The second-closest match, of Face ID from the database, to the recognition event.
 - **Conf2:** The third-closest match, of Face ID from the database, to the recognition event.

5. To see the full snapshot of the event, double-click the snapshot under **Image**.

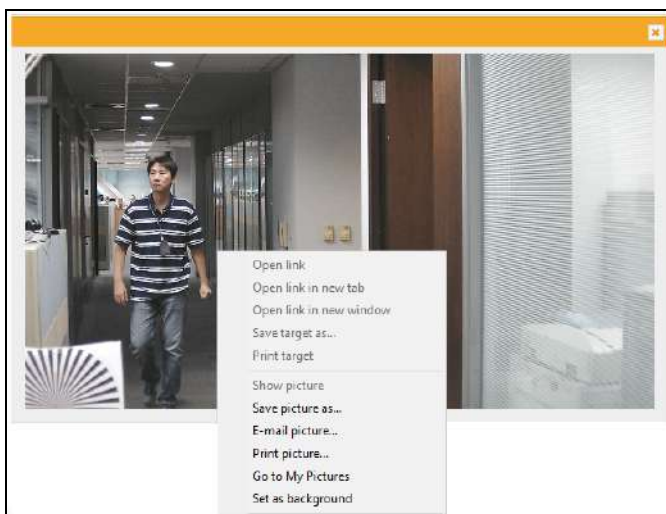


Figure 5-19

6. Right-click on the image for the following list of options:
- **Save picture as:** Save the picture as the format of your choice.
 - **E-mail picture:** Send the picture in the size of your choice to the e-mail address set up previously. For details on setting up e-mail notification, see *4.2.5 E-mail*.
 - **Print picture:** Print the picture by your printer.
 - **Go to My Pictures:** Open the **My Picture** folder in Windows.
 - **Set as background:** Set the image as the background of your PC.

7. To update and show query results periodically, select **Auto Polling**. Type the time interval in minutes in the next field. See *Figure 5-18*.

Note:

1. Your GV-VD8700 must be in the same time zone with your PC to display the recognition event history.
 2. When using the Search function, the results will include all entries containing the keyword searched for, unless further specified. Suppose the face database contains events related to “Alvin Martin” and “Alvin Huang”, both results are shown when using “Alvin” as the keyword. When the keyword is further specified as “Alvin Huang”, “Alvin Martin” is excluded from the search results.
 3. The texts and the snapshots of the face events have different recycle thresholds as they are stored in the camera’s storage space and the memory card respectively. As a result, some older events may be displayed as text-only events when the snapshots are removed due to the memory card reaching its 3GB limit while the event texts are still in place.
-

Chapter 6 Recording and Playback

The camera can only record video and audio to the camera's memory card upon disconnecting from GV-DVR / NVR / VMS. To do so, make sure that the micro-SD card is inserted into the memory card slot (No.15, *Figure 1-2*), formatted (see *4.4.4 External Storage*) and enable the **Disconnection Record** function. For details, see *4.4.3 Tools*. To set up audio recording, see *4.1.2 Audio Settings*.

6.1 Playback Using the Memory Card

You can access the recordings from your local PC by connecting the memory card to a memory card reader. Since the video files are saved in the MPEG4 format, they are accessible by any video player that supports the format. See *4.4.4 External Storage* to remove the micro-SD card safely.

Chapter 7 Advanced Applications

This chapter introduces advanced applications.

7.1 Upgrading System Firmware

GeoVision periodically updates the latest firmware to the company website. You can update the camera's firmware through the Web interface or GV-IP Device Utility.

7.1.1 Using the Web Interface

1. On the top bar, go to **System Settings**. Under **Management**, select **Tools** and click **Firmware Upgrade**.

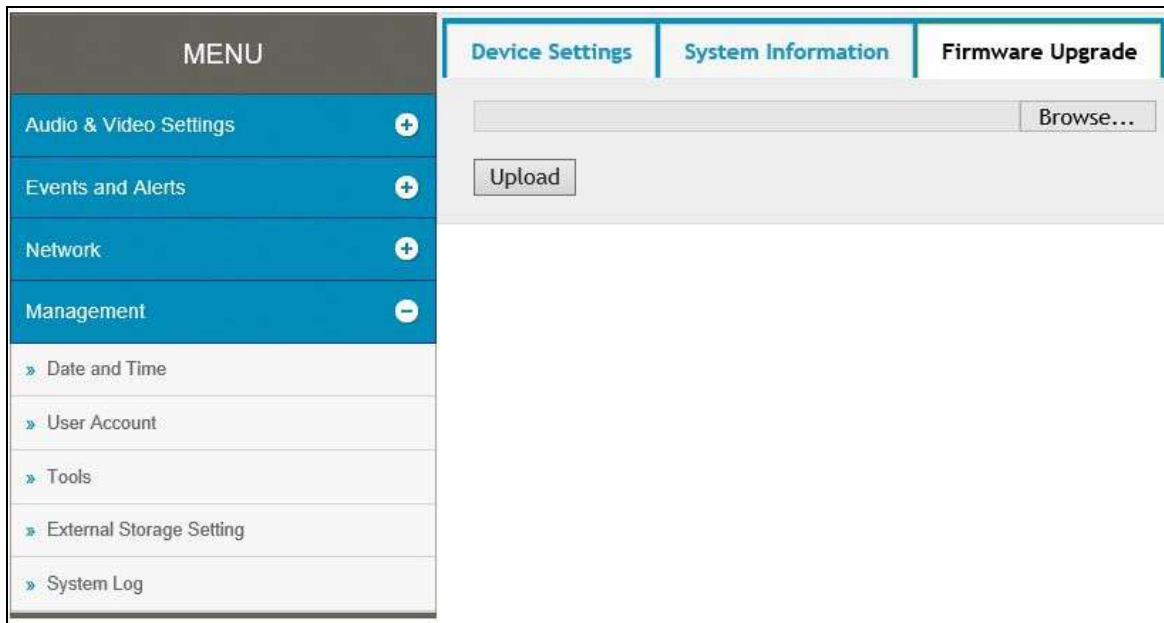


Figure 7-1

2. Click the **Browse** button to locate the firmware file (.img) saved at your local computer.
3. Click the **Upload** button to start upgrading.

7.1.2 Using the GV-IP Device Utility

The IP Device Utility provides another way to upgrade the firmware. Note the computer used to upgrade firmware must be under the network of the camera.

1. Download and install the **GV-IP Device Utility** from <http://www.geovision.com.tw/download/product/>.
2. Double-click the **GV-IP Device Utility** icon created on your desktop. This dialog box appears.

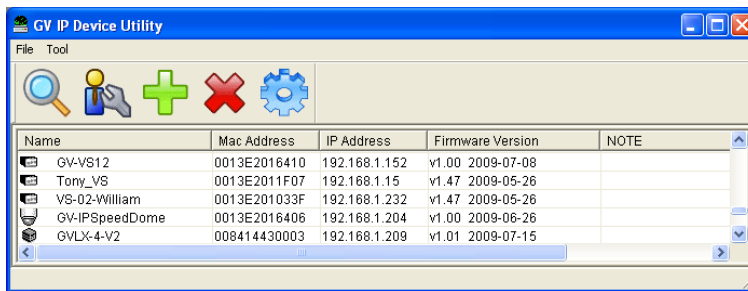


Figure 7-2

3. Click the **Search** button to locate the available camera on the same LAN. Or click the **New** button and assign the IP address to locate the camera on the Internet.
4. Double-click the camera in the list. This dialog box appears.

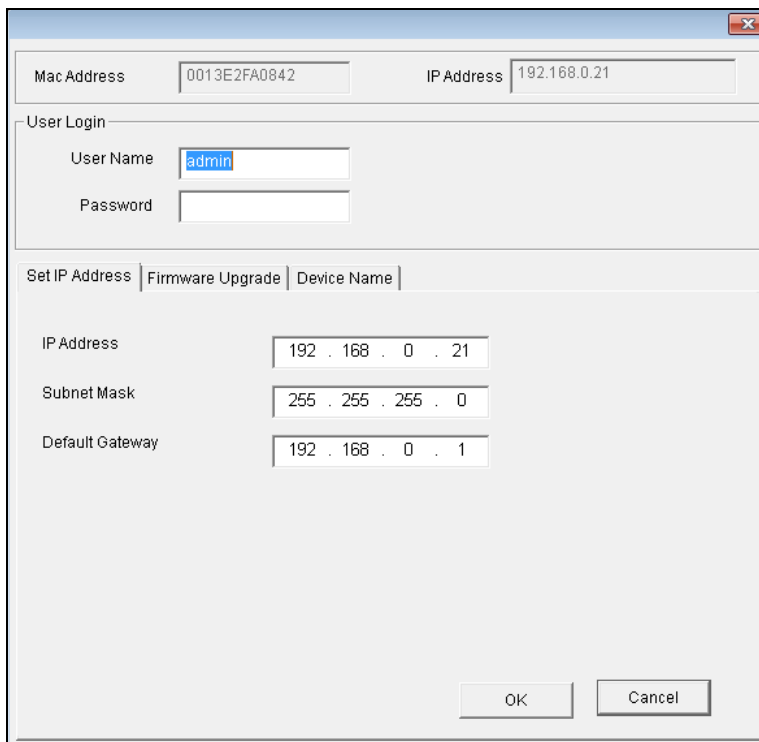


Figure 7-3

5. Click the **Firmware Upgrade** tab. This dialog box appears.

Mac Address: 0013E2FA0842 IP Address: 192.168.0.21

User Login

User Name: admin

Password: []

Set IP Address | **Firmware Upgrade** | Device Name

File: firmware.img Browse...

Upgrade all devices

Upgrade Cancel

Figure 7-4

5. Click the **Browse** button to locate the firmware file (.img) saved at your local computer.
6. Type **Password**, and click **Upgrade** to start the upgrade.

7.2 Restoring to Factory Default Settings

If for any reason the camera is not responding correctly, you can reset it to its factory default setting by using the camera's Web interface or by operating directly on the camera.

7.2.1 Using the Web Interface

1. On the Web interface, go to **System Settings**.
2. In the left menu of Web interface, select **Management** and click **Tools**.
3. Under the **Device Settings** tab, click the **Default** button to restore the factory default settings, and the current IP address of the camera will be kept.
4. To restore the camera and its IP address to factory default settings, select **Restore All Default Setting Without Keeping Current IP Address** and click **Default**.

7.2.2 Directly on the Camera

1. Keep the power and network cables (or PoE) connected to the camera.
2. Press and hold the **Default** button on the camera body. The status LED blinks. This shall take about 8 seconds.



Figure 7-5

3. Release the **Default** button when the status LED stops blinking. The process of loading default settings is completed and the camera reboots automatically.

Chapter 8 DVR / NVR / VMS Configurations

The GV-DVR / NVR / VMS provide a full range of video management functions and features, such as video viewing, recording, playback, alert settings and more. The following are the integration specifications:

- GV-DVR / NVR **version 8.7.4.0** or later or GV-VMS **version 17.1** or later is required.
- Face Recognition is only supported by GV-VMS. When applying Face Recognition, one GV-VD8700 can only be connected to one GV-VMS at a time. See *Configuring Face Setting, Chapter 3, GV-VMS User's Manual*.
- The GV-VD8700 supports up to 8 streams of connection.
- When a GV-VD8700 is connected to IE browser or GeoVision CMS applications, it takes up 1 stream when it is connected to GV-DVR / NVR / VMS, it takes up 2 streams.

Note: By default, GV-VD8700 is in dual streams and will take up 2 streams when connected to GV-DVR / NVR / VMS.

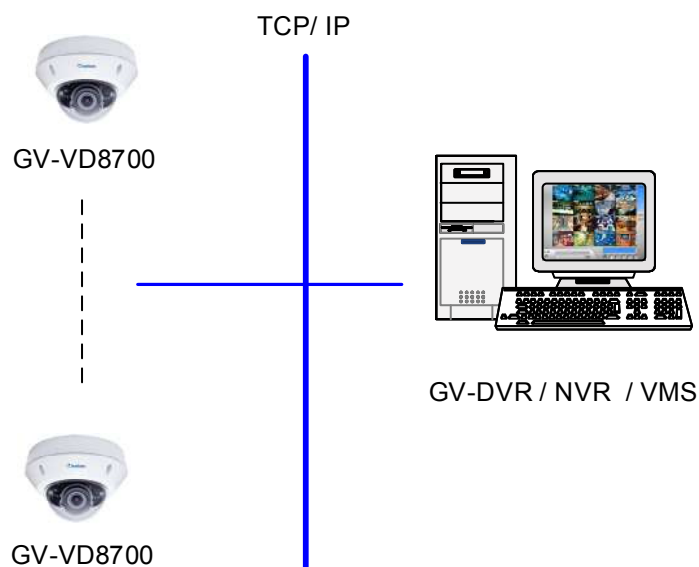


Figure 8-1

8.1 Setting Up IP Cameras on GV-DVR / NVR

Follow the steps below to manually connect your GV-VD8700 to GV-DVR / NVR.

Note: The following instructions are based on GV-DVR / NVR V8.7.4.0 software and user interfaces.

1. On the GV-DVR / NVR's main screen, click the **Configure** button, select **System Configure**, select **Camera Install** and click **IP Camera Install**. This dialog box appears.

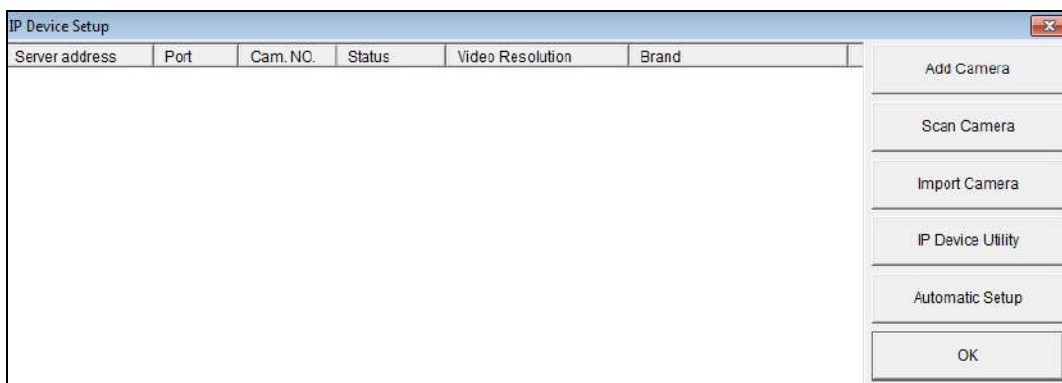


Figure 8-2

2. To automatically set up an IP camera, click **Scan Camera** to detect any IP cameras on the same LAN.
3. Double-click GV-VD8700 and type the camera's user name and password.

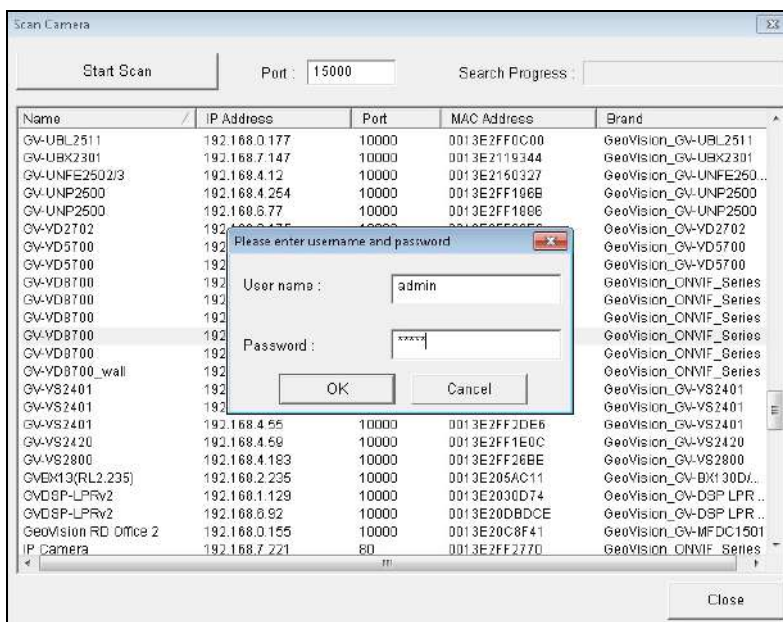


Figure 8-3

4. Click **OK** and this dialog box appears.

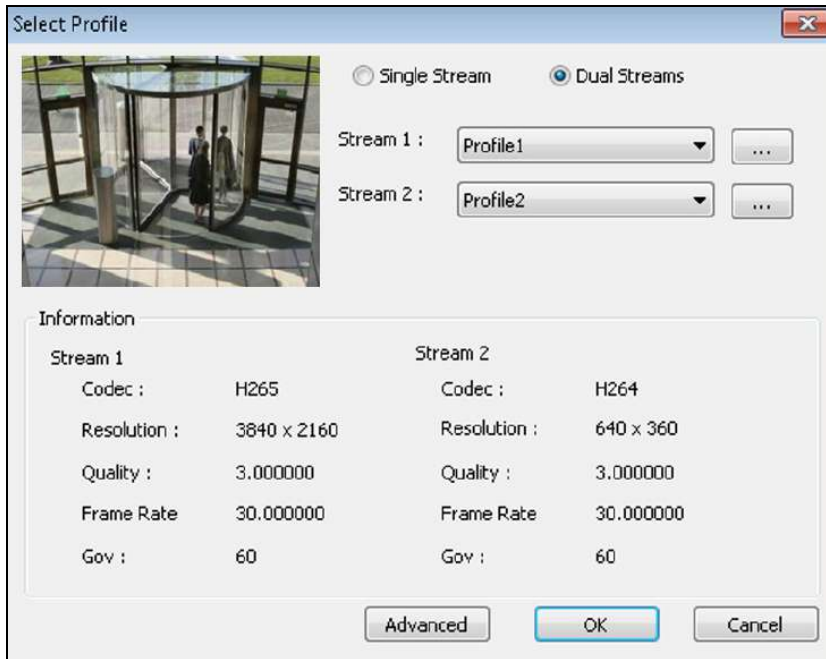


Figure 8-4

5. Click **OK** to add the camera to the connection list.
6. Click the listed camera and select **Display position** to map the IP camera to channel on the GV-DVR / NVR.

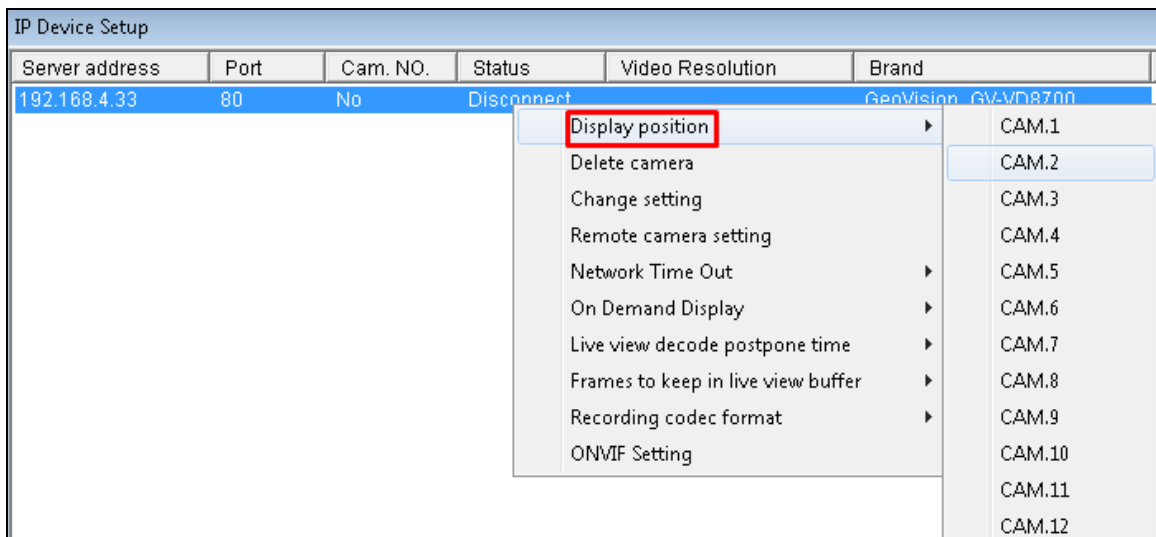


Figure 8-5

7. The Status column now should display “Connected”. Click **OK**. The dome view is displayed on the selected channel of GV-DVR / NVR.

8.1.1 Customizing Camera Settings on GV-DVR / NVR

After the GV-VD8700 is connected and assigned with a display channel, you can configure the camera's settings such as frame rate, codec type and resolution. Right-click the camera to see the following list of options:

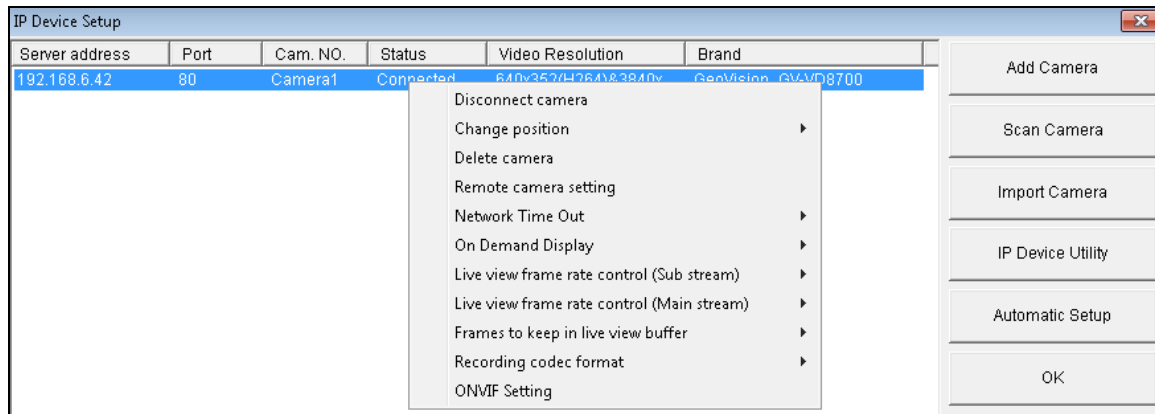


Figure 8-6

- **Disconnect camera:** Ends the connection to the GV-IP camera. You can change the settings of the camera after the camera is disconnected.
- **Change Position:** Changes the grid position where the live view is displayed on the main screen.
- **Delete camera:** Delete the camera on the camera list.
- **Remote Camera Settings:** Accesses the Web interface.
- **Network Time Out:** When network disconnection exceeds the specified time period, the camera status will be displayed as Connection Lost.
- **On Demand Display:** When the camera supports dual streaming with different resolutions, select **On Demand Display** to enable automatic adjustment of live view resolution.
- **Live-view frame rate control (Sub stream):** Sets the live view frame rate of the sub stream to help reduce the CPU usage. Select one of the following options when the live view codec of the camera is set to **H.264** or **H.265**:
 - **Maximum Live-view Frame Rate:** Views the video at the maximum frame rate possible.
 - **Live-view Key Frame only:** You can choose to view the key frames of the videos only instead of all frames on the live view. This option is related to the GOP setting of the IP camera. For example, if the GOP value is set to 30, there is only one key frame among 30 frames.




- **Live-view frame rate control (Main stream):** Sets the live view frame rate of the main stream with higher resolution when On Demand function is enabled. Refer to Live-view frame rate control above to see the options available.
- **Frames to keep in live view buffer:** Specifies the number of frames to keep in the live view buffer.
- **Recording Codec Format:** Specifies whether to record in standard or GeoVision type of H.264 / H.265 codec.
- **ONVIF Settings:** Adjusts the camera's video settings when connecting through ONVIF protocol. See *8.1 Setting Up IP Cameras on GV-DVR / NVR*.

8.2 Setting Up IP Cameras on GV-VMS

Follow the steps and conform the integration specification below to manually connect your GV-VD8700 to GV-VMS.

- When applying Face Recognition, one GV-VD8700 camera can only be connected to one GV-VMS host at a time.

Note: The following instructions are based on V17.1 software and user interfaces.

1. To access the IP Device Setup page, click **Home** , select **Toolbar** , click **Configure**  and select **Camera Install**.

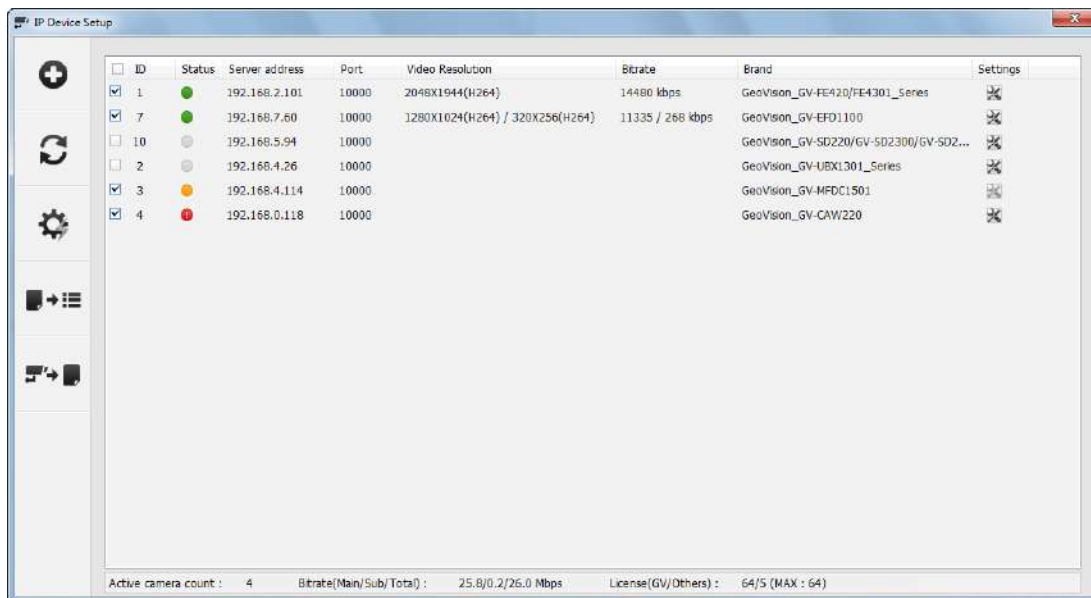


Figure 8-7

2. Click **Automatic Setup**.

- Double-click GV-VD8700 and type the **User name** and **Password** of the camera.

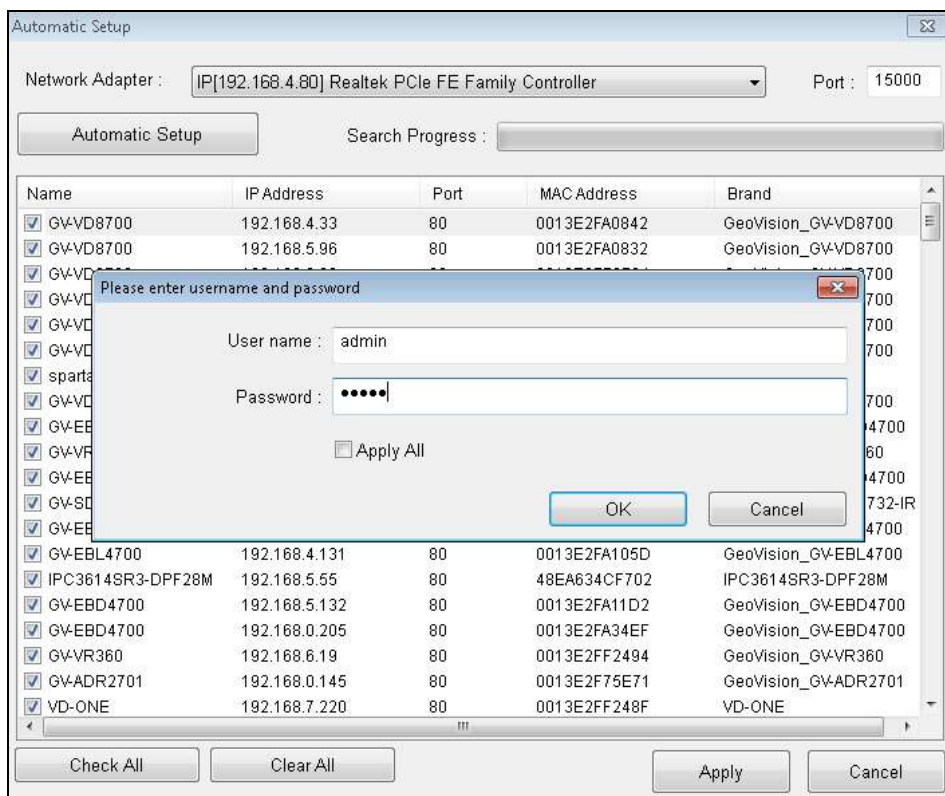


Figure 8-8

- Click **OK** and this dialog box appears.

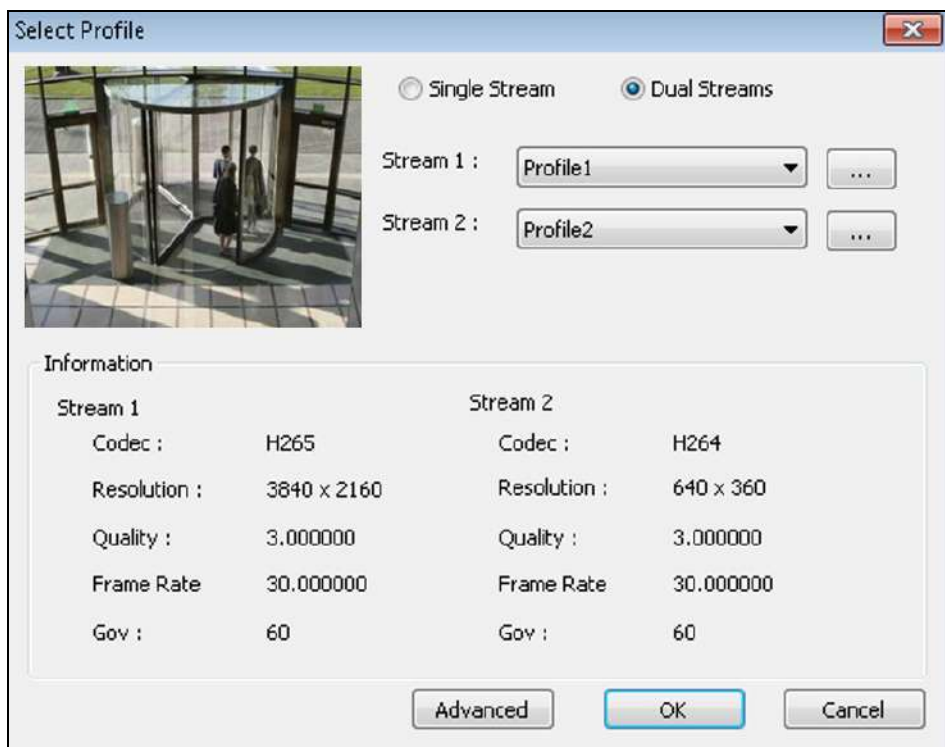


Figure 8-9

5. Click **OK** to add the camera to the list.
6. To connect the added camera, click the box besides the **ID** column. Upon successful connection, the **Status** icon shows green, with the video resolution and bit rate being displayed in the correspondent columns.



<input checked="" type="checkbox"/>	ID	Status	Server address	Port	Video Resolution	Bitrate	Brand	Settings
<input checked="" type="checkbox"/>	1		192.168.6.42	80	3840X2160(H264) / 640X352(H264)	8953 / 1005 kbps	GeoVision_GV-VD8700(ONVIF)	

Figure 8-10

Chapter 9 Smart Device Connection

You can access the live view and play back recordings on your mobile devices using the mobile application GV-Eye. Android Smartphone, tablet, iPad, iPhone and iPod Touch are supported.

For details on system requirements, installation and setup, visit our website:

<http://www.geovision.com.tw/>

Appendix

A. RTSP Protocol Support

The GV-VD8700 supports RTSP protocol for both video and audio streaming. For RTSP command, enter:

```
rtsp://<IP of the GV-VD8700:8554/<CH No.>.sdp
```

For example, `rtsp://192.168.3.111:8554/CH001.sdp`

Note: Only VLC and QuickTime players are supported for streaming video via RTSP protocol.

B. Limitations to Face Recognition

Remove and avoid the articles and angle of view listed below, which can cause face recognition to be ineffective.

- Masks
- Helmets
- Hats
- Sun Glasses
- Bangs that Obscure the Forehead or the Eyes
- Lowered Head or Side Face View

Helmet	Lowered Head	Side Face View
